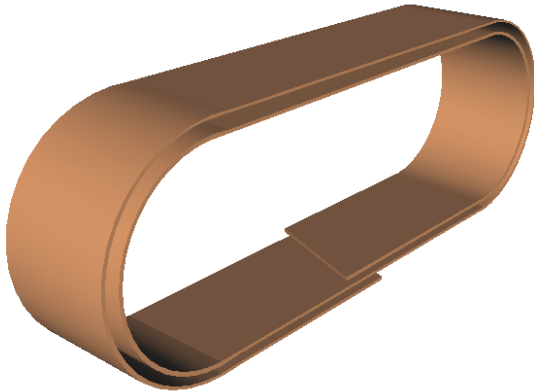


Characteristics of MINET truly endless cable pulling and haul off belts.

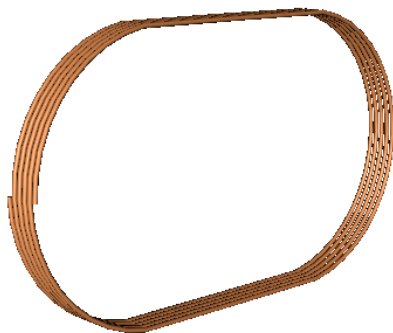
Wire and Cable extrusion, Wire rope and Braided wire manufacture, Metal tube and profile extrusion, Pultrusion, Thermoplastic and rubber extrusion.



carcass with 2 to 6 plies (**wound up**).
resistance from 200 to 1500 kg/cm.

slight elongation, vulcanization under tension

fabrics especially chosen for belts working under very high tensions.

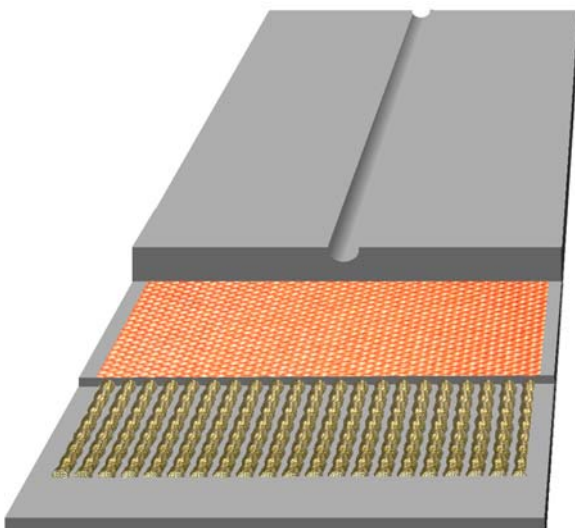


carcass with cord (**wound up**) :
Rayon, Aramid or metallic cables.

resistance 250 to 1600 kg/cm.

very slight elongation, vulcanization under tension

manufactured for working under very high tensions



vulcanized cover

carcass could be manufactured with cord reinforced with fabric.

rubber resistant to abrasion
or oil and grease
or temperature

hardness of the cover : from 40 to 70 ShA

cover colours : white or black

machining from to block
arc of circle, V, poly-V...