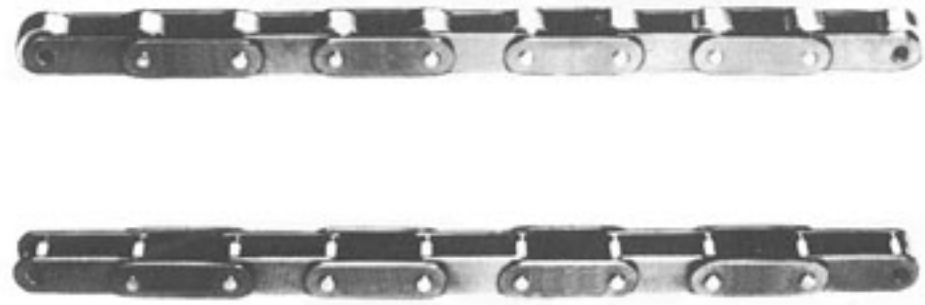
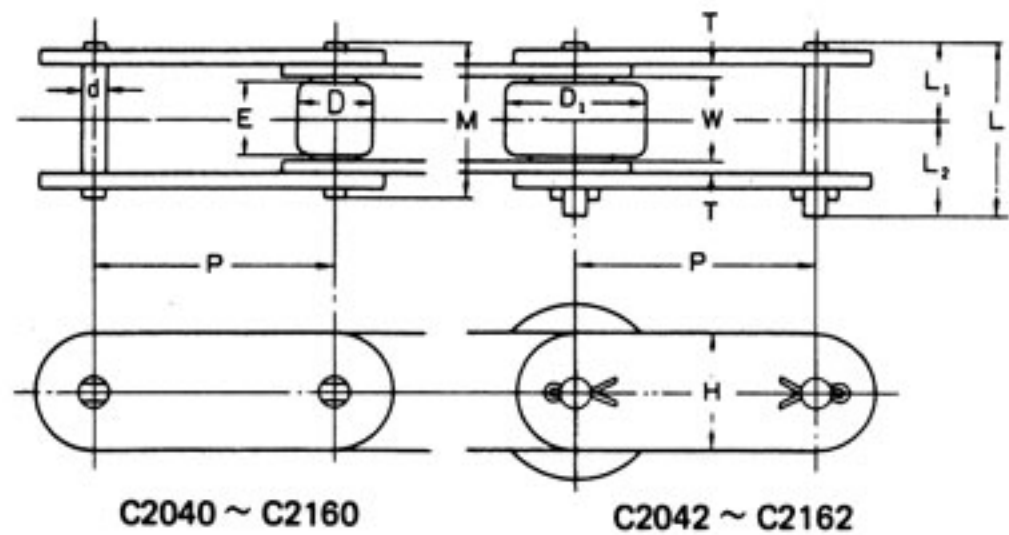


C2040 – C2160 double-pitch roller-chains are assembled with the same diameter as those of power transmission chains No. 40 – No. 160, so any of the standard sprockets of 30 teeth or more can be used as they are. Thus, a C2040 32-tooth sprocket (16 teeth in mesh) can be used with a No. 40 32-tooth sprocket. C2042 – C2102 chain rollers have the same diameter as those of power transmission chains No. 80 – No. 200.



Double Pitch Roller Chains for Conveyor



Dimension Diagram of Double Pitch Roller Chain

• Dimensions and Strength of Double Pitch Roller Chain for Conveyor

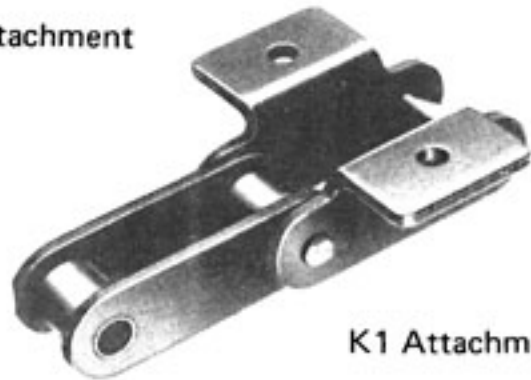
Chain No.	Average Pitch P (mm)	Average Ultimate Strength (kg)	Weight (kg/m)	Roller			Inner Width of Roller Link W (mm)	Pin					Link Plate	
				Dia. (mm)		Width E (mm)		Outside Dia. d (mm)	RP- Length M (mm)	CP-Length (mm)			Height H (mm)	Thick- ness T (mm)
				D	D ₁					L	L ₁	L ₂		
C2040 C2042	25.40	1,920	0.50 0.85	7.94 -	- 15.88	7.6	7.95	3.96	16.4	18.2	8.2	10.0	11.5	1.5
C2050 C2052	31.75	3,000	0.85 1.30	10.16 -	- 19.05	9.3	9.53	5.08	20.4	22.2	10.2	12.0	15.0	2.0
C2060 C2062	38.10	4,320	1.50 2.15	11.91 -	- 22.23	12.4	12.70	5.95	28.7	31.0	14.3	16.7	17.0	3.2
C2080 C2082	50.80	8,000	2.50 3.65	15.88 -	- 28.58	15.6	15.88	7.93	35.6	38.8	17.8	21.0	22.8	4.0
C2100 C2102	63.5	12,000	3.46 5.64	19.05 -	- 39.69	18.8	19.05	9.53	42.2	45.7	21.1	24.6	28.8	4.8
C2120 C2122	76.2	17,000	4.92 7.87	22.23 -	- 44.45	25.2	25.40	11.10	52.4	56.8	26.2	30.6	35.0	5.6
C2160 C2162	101.6	28,000	8.02 12.77	28.58 -	- 57.15	31.5	31.75	14.28	67.3	72.2	33.7	38.5	47.8	7.2

Note: Rivet Pin Type (RP) is standard and Cotter Pin Type (CP) is also available.

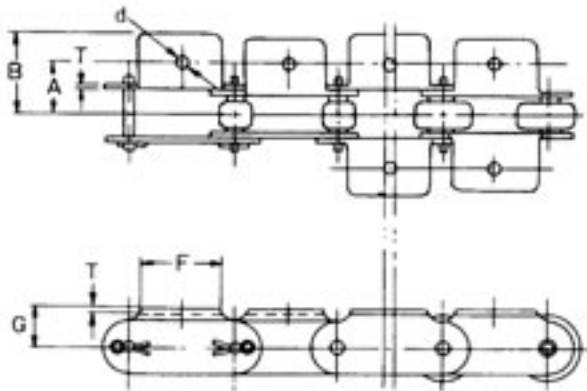
● A1·K1 Attachment



A1 Attachment



K1 Attachment



Dimension Diagram of A1 · K1 Attachment

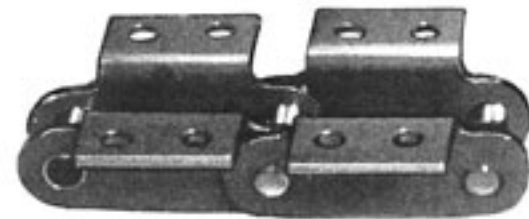
● Dimensions of A1 · K1 Attachment

Chain No.	Dimensions (mm)						Additional Weight (kg/pc)	
	A	B	d	F	G	T	A1	K1
C2040 C2042	12.7	19.1	3.6	19.0	9.1	1.5	0.003	0.006
C2050 C2052	15.9	24.2	5.2	23.8	11.1	2.0	0.007	0.014
C2060 C2062	21.4	32.8	5.2	28.6	14.7	3.2	0.017	0.034
C2080 C2082	27.8	42.2	6.8	38.1	19.1	4.0	0.036	0.072
C2100 C2102	33.3	50.0	8.8	47.6	23.4	4.8	0.064	0.128
C2120 C2122	39.7	61.9	10.5	57.2	27.8	5.6	0.102	0.204
C2160 C2162	52.4	76.1	14.0	76.2	36.5	7.2	0.262	0.524

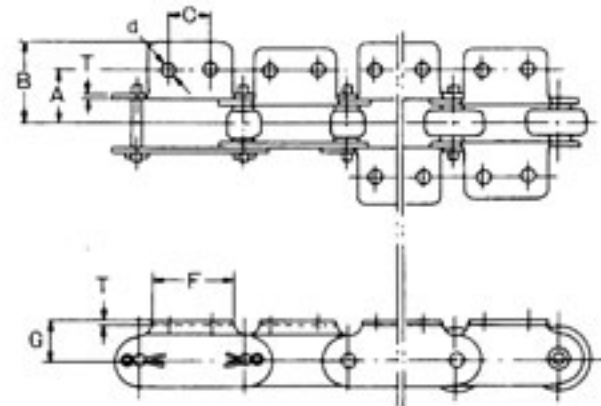
● A2·K2 Attachment



A2 Attachment



K2 Attachment



Dimension Diagram of A2 · K2 Attachment

● Dimensions of A2 · K2 Attachment

Chain No.	Dimensions (mm)							Additional Weight (kg/pc)	
	A	B	d	F	G	C	T	A2	K2
C2040 C2042	12.7	19.1	3.6	19.0	9.1	9.5	1.5	0.003	0.006
C2050 C2052	15.9	24.2	5.2	23.8	11.1	11.9	2.0	0.007	0.014
C2060 C2062	21.4	32.8	5.2	28.6	14.7	14.3	3.2	0.017	0.034
C2080 C2082	27.3	42.2	6.8	38.1	19.1	19.1	4.0	0.036	0.072
C2100 C2102	33.3	50.0	8.8	47.6	23.4	23.8	4.8	0.064	0.128
C2120 C2122	39.7	61.9	10.5	57.2	27.8	28.6	5.6	0.102	0.204
C2160 C2162	52.4	76.1	14.0	76.2	36.5	38.1	7.2	0.262	0.544

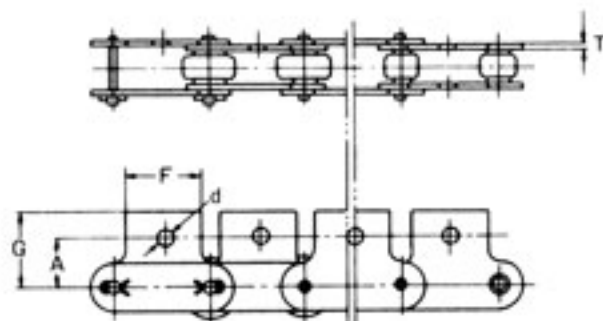
● SA1·SK1 Attachment



SA1 Attachment



SK1 Attachment

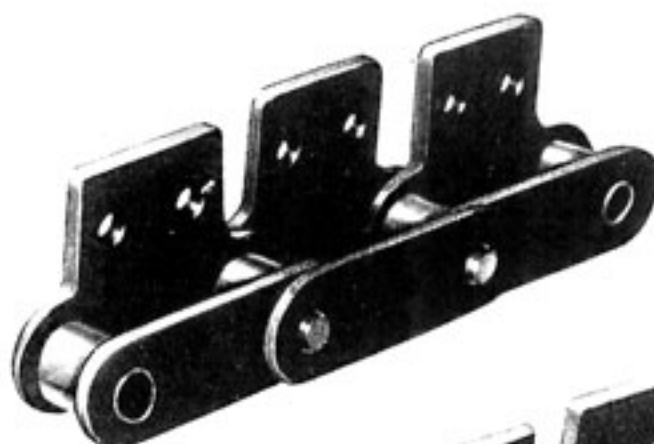


Dimension Diagram of SA1 · SK1 Attachment

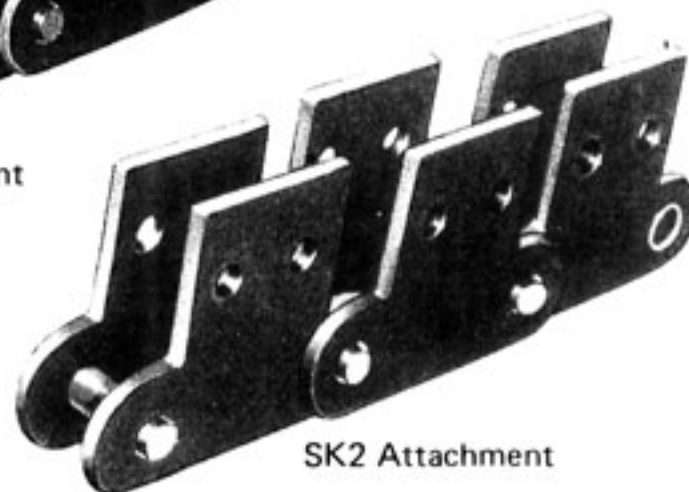
● Dimensions of SA1 · SK1 Attachment

Chain No.	Dimensions (mm)					Additional Weight (kg/pc)	
	A	d	F	G	T	SA1	SK1
C2040 C2042	11.1	5.2	19.0	19.8	1.5	0.003	0.006
C2050 C2052	14.3	6.8	23.8	24.6	2.0	0.007	0.014
C2060 C2062	17.5	8.7	28.6	31.8	3.2	0.017	0.034
C2080 C2082	22.2	10.3	38.1	41.7	4.0	0.036	0.072
C2100 C2102	28.6	14.0	47.6	50.3	4.8	0.066	0.132
C2120 C2122	33.3	16.0	57.2	61.1	5.6	0.097	0.194
C2160 C2162	44.5	21.0	76.2	76.2	7.2	0.233	0.466

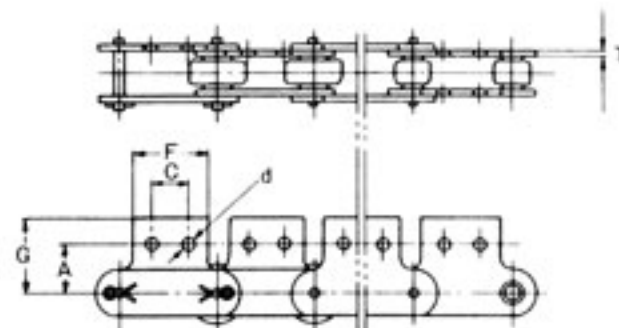
● SA2·SK2 Attachment



SA2 Attachment



SK2 Attachment

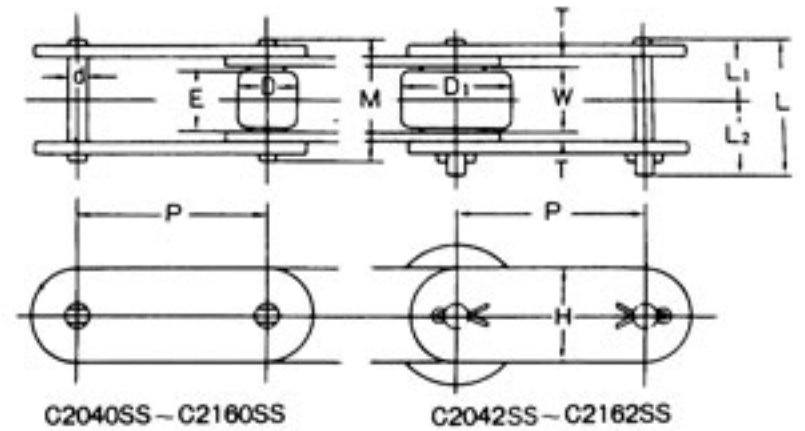


Dimension Diagram of SA2 · SK2 Attachment

● Dimensions of SA2 · SK2 Attachment

Chain No.	Dimensions (mm)						Additional Weight (kg/pc)	
	A	d	F	G	C	T	SA2	SK2
C2040 C2042	13.5	3.6	19.0	19.8	9.5	1.5	0.003	0.006
C2050 C2052	15.9	5.2	23.8	24.6	11.9	2.0	0.007	0.014
C2060 C2062	19.1	5.2	28.6	31.8	14.3	3.2	0.017	0.034
C2080 C2082	25.4	6.8	38.1	41.7	19.1	4.0	0.036	0.072
C2100 C2102	31.8	8.8	47.6	50.3	23.8	4.8	0.066	0.132
C2120 C2122	37.3	10.5	57.2	61.1	28.6	5.6	0.097	0.194
C2160 C2162	50.8	14.0	76.2	76.2	38.1	7.2	0.233	0.466

These chains are made of the same 18-8 stainless steel as single-pitch stainless steel roller chains. Their resistance to corrosion make these chains the ideal choice for conveyor applications involving food, pharmaceutical products and the like, while their heat-resistance also makes them ideal for applications in heat-treatment furnaces.

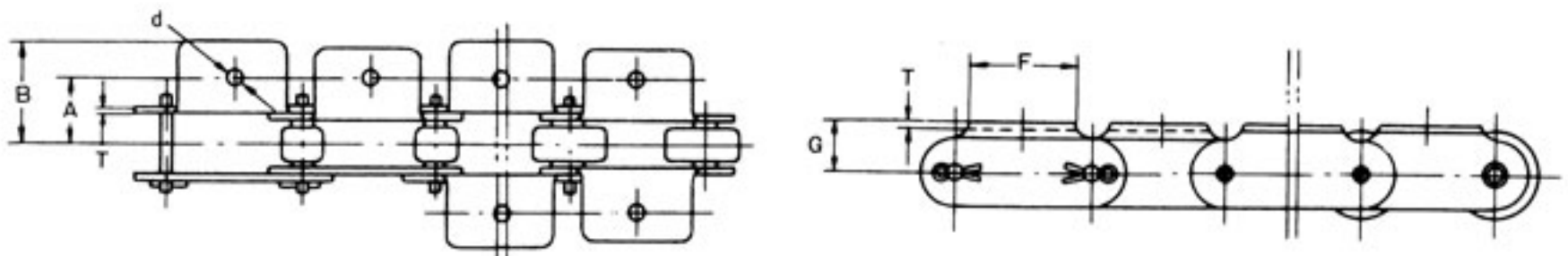


Dimension Diagram of Stainless Steel Double-Pitch Roller Chains

● **Dimensions of Stainless Steel Double-Pitch Roller Chain**

Chain No.	Average Pitch P (mm)	Allowable Chain Pull (kg)	Average Ultimate Strength (kg)	Weight (kg/m)	Roller		Width E (mm)	Inner Width of Roller Link W (mm)	Pin			Link Plate			
					Dia. (mm)				Outside Dia. d (mm)	RP-Length M (mm)	CP-length (mm)		Height H (mm)	Thick-ness T (mm)	
					D	D ₁					L	L ₁			L ₂
C2040SS C2042SS	25.40	45	1,260	0.50 0.85	7.94 —	— 15.88	7.6	7.95	3.96	16.4	18.2	8.2	10.0	11.5	1.5
C2050SS C2052SS	31.75	70	2,070	0.85 1.30	10.16 —	— 19.05	9.3	9.53	5.08	20.4	22.2	10.2	12.0	15.0	2.0
C2060SS C2062SS	38.10	110	2,790	1.50 2.15	11.91 —	— 22.23	12.4	12.70	5.95	28.7	31.0	14.3	16.7	17.0	3.2
C2080SS C2082SS	50.80	175	4,500	2.50 3.65	15.88 —	— 28.58	15.6	15.88	7.93	35.6	38.8	17.8	21.0	22.8	4.0
C2100SS C2102SS	63.50	270	5,800	3.46 5.64	19.05 —	— 39.69	18.8	19.05	9.53	42.2	45.7	21.1	24.6	28.8	4.8
C2120SS C2122SS	76.20	390	7,800	4.92 7.87	22.23 —	— 44.45	25.2	25.40	11.10	52.4	56.8	26.2	30.6	35.0	5.6
C2160SS C2162SS	101.60	650	12,500	8.02 12.77	28.58 —	— 57.15	31.5	31.75	14.28	67.3	72.2	33.7	38.5	47.8	7.2

Note: River Pin Type (RP) is standard and Cotter Pin Type (CP) is also available. Boldface type indicates chains normally carried in stock.

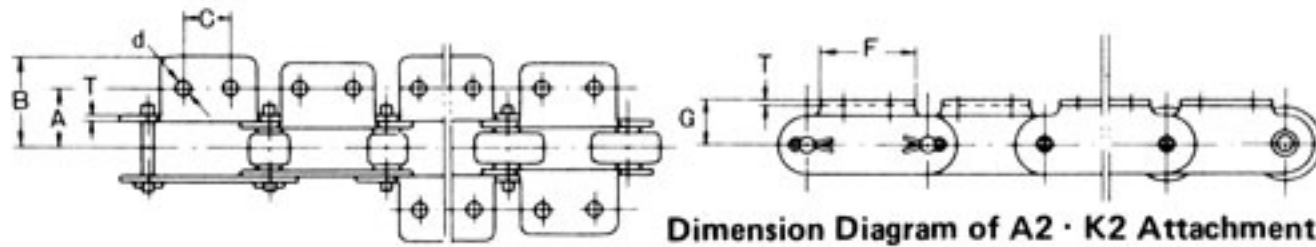


Dimension Diagram of A1 · K1 Attachment

● **Dimensions of Roller Chains with Top Rollers**

Chain No.	Dimensions (mm)						Additional Weight (kg/pc)	
	A	B	d	F	G	T	A1	K1
C2040SS C2042SS	12.7	19.1	3.6	19.0	9.1	1.5	0.003	0.006
C2050SS C2052SS	15.9	24.2	5.2	23.8	11.1	2.0	0.007	0.014
C2060SS C2062SS	21.4	32.8	5.2	28.6	14.7	3.2	0.017	0.034
C2080SS C2082SS	27.8	42.2	6.8	38.1	19.1	4.0	0.036	0.072
C2100SS C2102SS	33.3	50.0	8.8	47.6	23.4	4.8	0.064	0.128
C2120SS C2121SS	39.7	61.9	10.5	57.2	27.8	5.6	0.102	0.204
C2160SS C2162SS	52.4	76.1	14.0	76.2	36.5	7.2	0.262	0.524

● A2·K2 Attachment

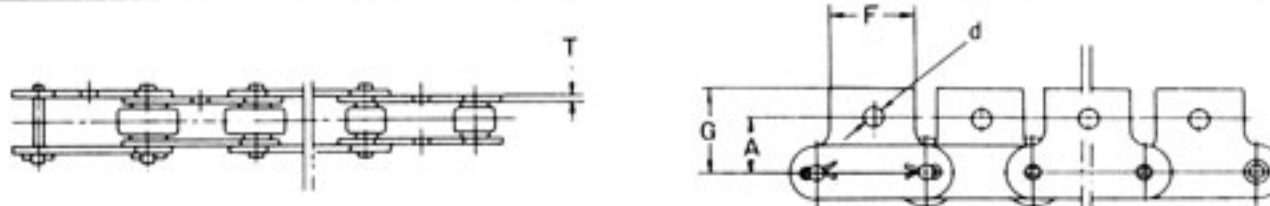


Dimension Diagram of A2 · K2 Attachment

● Dimensions of A2 · K2 Attachment

Chain No.	Dimensions (mm)							Additional Weight (kg/pc)	
	A	B	d	F	G	C	T	A2	K2
C2040SS C2042SS	12.7	19.1	3.6	19.0	9.1	9.5	1.5	0.003	0.006
C2050SS C2052SS	15.9	24.2	5.2	23.8	11.1	11.9	2.0	0.007	0.014
C2060SS C2062SS	21.4	32.8	5.2	28.6	14.7	14.3	3.2	0.017	0.034
C2080SS C2082SS	27.8	42.2	6.8	38.1	19.1	19.1	4.0	0.036	0.072
C2100SS C2102SS	33.3	50.0	8.8	47.6	23.4	23.8	4.8	0.064	0.128
C2120SS C2122SS	39.7	61.9	10.5	57.2	27.8	28.6	5.6	0.102	0.204
C2160SS C2162SS	52.4	76.1	14.0	76.2	36.5	38.1	7.2	0.262	0.574

● SA1·SK1 Attachment

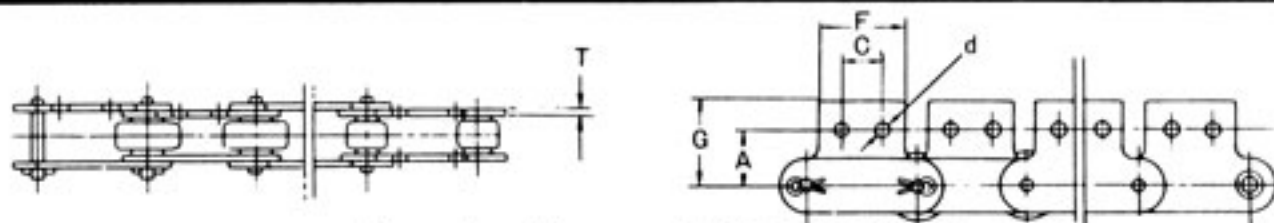


Dimension Diagram of SA1 · SK1 Attachment

● Dimensions of SA1 · SK1 Attachment

Chain No.	Dimensions (mm)					Additional Weight (kg/pc)	
	A	d	F	G	T	SA1	SK1
C2040SS C2042SS	11.1	5.2	19.0	19.8	1.5	0.003	0.006
C2050SS C2052SS	14.3	6.8	23.8	24.6	2.0	0.007	0.014
C2060SS C2062SS	17.5	8.7	28.6	31.8	3.2	0.017	0.034
C2080SS C2082SS	22.2	10.3	38.1	41.7	4.0	0.036	0.072
C2100SS C2102SS	28.6	14.0	47.6	50.3	4.8	0.066	0.132
C2120SS C2122SS	33.3	16.0	57.2	61.1	5.6	0.097	0.194
C2160SS C2162SS	44.5	21.0	76.2	76.2	7.2	0.233	0.466

● SA2·SK2 Attachment



Dimension Diagram of SA2 · SK2 Attachment

● Dimensions of SA2 · SK2 Attachment

Chain No.	Dimensions (mm)						Additional Weight (kg/pc)	
	A	d	F	G	C	T	SA2	SK2
C2040SS C2042SS	13.5	3.6	19.0	19.8	9.5	1.5	0.003	0.006
C2050SS C2052SS	15.9	5.2	23.8	24.6	11.9	2.0	0.007	0.014
C2060SS C2062SS	19.1	5.2	28.6	31.8	14.3	3.2	0.017	0.034
C2080SS C2082SS	25.4	6.8	38.1	41.7	19.1	4.0	0.036	0.072
C2100SS C2102SS	31.8	8.8	47.6	50.3	23.8	4.8	0.066	0.132
C2120SS C2122SS	37.8	10.5	57.2	61.1	28.6	5.6	0.097	0.194
C2160SS C2162SS	50.8	14.0	76.2	76.2	38.1	7.2	0.233	0.166