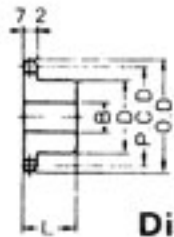


● 2040 Sprocket



Type B

Dimension Diagram of 2040 Sprocket

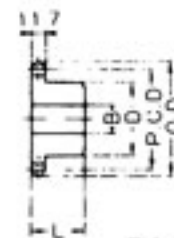
● Dimensions of 2040 Sprocket

(mm)

Number of Teeth	Number of Teeth in Action	Pitch Diameter P.C.D.	Outside Diameter O.D.	Type B				Weight (kg)	Material
				Bore Dia. B		Hub			
				Stock	Max.	Dia. D	Width L		
11	5½	46.98	51	9	18	30	25	0.20	Type B S35C
12	6	50.80	55	9	22	34	25	0.22	
13	6½	54.66	59	13	24	38	25	0.25	
14	7	58.55	63	13	26	42	25	0.30	
15	7½	62.45	67	13	28	46	25	0.35	
16	8	66.37	71	13	32	50	25	0.40	
17	8½	70.31	75	13	34	54	30	0.50	
18	9	74.27	80	13	34	54	30	0.60	
19	9½	78.23	84	13	34	54	30	0.65	
20	10	82.20	88	13	36	56	40	0.75	
21	10½	86.17	92	13	36	56	40	0.80	
22	11	90.16	96	13	36	56	40	0.90	
23	11½	94.14	100	13	36	56	40	1.00	
24	12	98.14	104	13	36	56	40	1.10	
25	12½	102.14	108	13	36	56	40	1.15	
26	13	106.14	112	13	36	56	40	1.20	
27	13½	110.14	116	13	40	65	40	1.25	
28	14	114.15	120	13	40	65	40	1.30	
29	14½	118.16	124	13	40	65	40	1.40	
30	15	122.17	129	13	40	65	40	1.50	

Note: Sprockets with 11 to 30 teeth have hardened teeth surface.

● 2060 Sprocket



Type B

Dimension Diagram of 2060 Sprocket

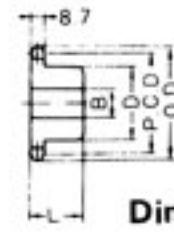
● Dimensions of 2060 Sprocket

(mm)

Number of Teeth	Number of Teeth in Action	Pitch Diameter P.C.D.	Outside Diameter O.D.	Type B				Weight (kg)	Material
				Bore Dia. B		Hub			
				Stock	Max.	Dia. D	Width L		
11	5½	70.47	76	13	28	45	40	0.7	Type B S35C
12	6	76.20	83	13	32	51	40	0.8	
13	6½	81.98	88	13	35	56	40	0.9	
14	7	87.81	95	16	35	56	40	1.0	
15	7½	93.67	101	16	35	56	40	1.1	
16	8	99.57	107	16	35	56	40	1.2	
17	8½	105.47	113	16	45	70	40	1.6	
18	9	111.40	119	16	45	70	40	1.9	
19	9½	117.34	125	16	45	70	40	2.1	
20	10	124.30	132	16	50	80	45	2.4	
21	10½	129.26	138	16	50	80	45	2.5	
22	11	135.24	144	16	50	80	45	2.6	
23	11½	141.22	150	16	50	80	45	2.8	
24	12	147.21	156	16	50	80	45	3.0	
25	12½	153.20	162	16	50	80	45	3.2	
26	13	159.20	168	16	50	80	45	3.3	
27	13½	165.21	174	16	50	80	45	3.5	
28	14	171.22	181	16	50	85	50	3.6	
29	14½	177.23	187	16	50	85	50	3.7	
30	15	183.26	193	20	50	85	50	4.0	

Note: Sprockets with 11 to 30 teeth have hardened teeth surface.

● 2050 Sprocket



Type B

Dimension Diagram of 2050 Sprocket

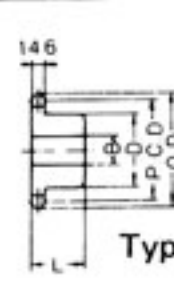
● Dimensions of 2050 Sprocket

(mm)

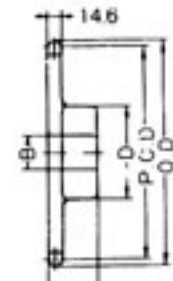
Number of Teeth	Number of Teeth in Action	Pitch Diameter P.C.D.	Outside Diameter O.D.	Type B				Weight (kg)	Material
				Bore Dia. B		Hub			
				Stock	Max.	Dia. D	Width L		
11	5½	558.72	63	13	24	37	25	0.30	Type B S35C
12	6	63.50	69	13	26	43	25	0.40	
13	6½	68.32	74	13	30	48	30	0.50	
14	7	73.18	79	13	34	53	30	0.60	
15	7½	78.06	84	13	36	58	30	0.70	
16	8	82.96	89	13	40	63	30	0.80	
17	8½	87.89	94	13	40	65	40	0.95	
18	9	92.84	100	13	40	65	40	1.20	
19	9½	97.78	104	13	42	66	40	1.30	
20	10	102.75	110	13	45	70	45	1.60	
21	10½	107.72	115	13	45	70	45	1.75	
22	11	112.70	120	16	45	70	45	1.80	
23	11½	117.68	125	16	45	70	45	1.85	
24	12	122.67	130	16	45	70	45	1.90	
25	12½	127.67	135	16	45	70	45	2.00	
26	13	132.67	140	16	45	70	45	2.10	
27	13½	137.67	145	16	45	70	45	2.20	
28	14	142.68	150	16	45	70	45	2.35	
29	14½	147.70	155	16	45	70	45	2.50	
30	15	152.70	161	16	45	70	45	2.60	

Note: Sprockets with 11 to 30 teeth have hardened teeth surface.

● 2080 Sprocket



Type B



Type BW

Dimension Diagram of 2080 Sprocket

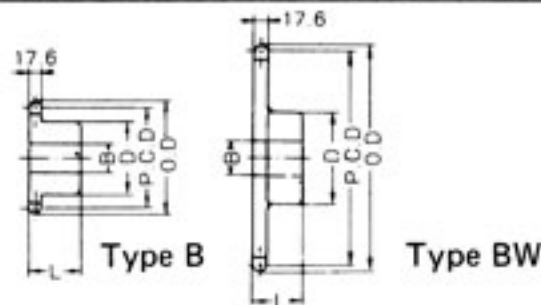
● Dimensions of 2080 Sprocket

(mm)

Number of Teeth	Number of Teeth in Action	Pitch Diameter P.C.D.	Outside Diameter O.D.	Type B, Type BW				Weight (kg)	Material	
				Bore Dia. B		Hub				
				Stock	Max.	Dia. D	Width L			
11	5½	93.96	101	17	38	60	50	1.7	Type B S35C	
12	6	101.60	110	17	45	69	50	1.9		
13	6½	109.31	118	17	50	77	50	2.1		
14	7	117.09	126	17	50	80	50	2.4		
15	7½	126.79	134	20	50	80	50	2.6		
16	8	132.74	143	20	50	80	50	3.0		
17	8½	140.63	151	20	55	90	50	3.3		
18	9	148.54	159	20	55	90	50	3.5		
19	9½	156.45	167	20	55	90	50	3.7		
20	10	164.39	176	20	55	90	50	4.3		
21	10½	172.35	184	20	55	90	50	4.4		
22	11	180.31	192	20	60	93	50	4.7		Type BW SS41
23	11½	188.29	200	20	60	93	50	5.0		
24	12	196.28	208	20	60	93	50	5.3		
25	12½	204.27	216	20	60	93	50	5.6		
26	13	212.27	224	20	60	93	50	5.9		
27	13½	220.28	233	20	60	93	50	6.2		
28	14	228.30	241	20	60	93	50	6.5		
29	14½	236.31	249	20	60	93	50	6.9		
30	15	244.35	257	20	60	93	50	7.2		

Notes: Sprockets with 11 to 21 teeth have hardened teeth surface. Sprockets with 22 to 30 teeth are of welded SS41 steel.

●2100 Sprocket



Dimension Diagram of 2100 Sprocket

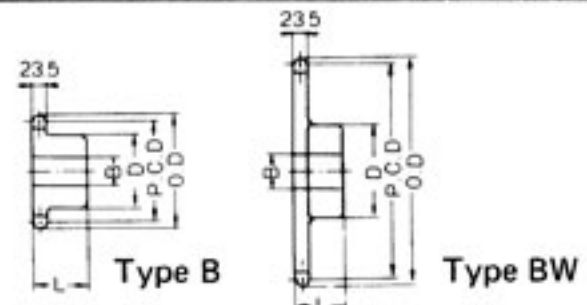
● Dimensions of 2100 Sprocket

(mm)

Number of Teeth	Number of Teeth in Action	Pitch Diameter P.C.D.	Outside Diameter O.D.	Type B, Type BW				Weight (kg)	Material
				Bore Dia. B		Hub			
				Stock	Max.	Dia. D	Width L		
11	5½	117.45	127	26	48	76	70	3.05	Type B S35C
12	6	127.00	138	26	55	86	70	3.85	
13	6½	136.64	148	26	60	96	70	4.45	
14	7	146.35	158	26	65	100	70	5.60	
15	7½	156.12	168	26	65	100	70	6.05	
16	8	165.93	179	26	65	100	70	6.55	
17	8½	175.78	189	26	65	105	80	7.65	
18	9	185.66	199	26	65	105	80	7.95	
19	9½	195.57	209	26	65	105	80	8.35	
20	10	205.49	220	26	65	105	80	8.65	
21	10½	215.43	230	26	65	105	80	8.90	
22	11	225.39	240	26	70	108	60	8.61	Type BW SS41
23	11½	235.36	250	26	70	108	60	9.17	
24	12	245.35	260	26	70	108	60	9.65	
25	12½	255.34	270	26	70	108	60	10.2	
26	13	265.34	281	26	70	108	60	10.8	
27	13½	275.35	291	26	70	108	60	11.6	
28	14	285.37	301	26	70	108	60	12.0	
29	14½	295.39	311	26	70	108	60	12.7	
30	15	305.42	321	26	70	108	60	13.3	

Notes: Sprockets with 11 to 21 teeth have hardened teeth surface.
Sprockets with 22 to 30 teeth are of welded SS41 steel.

●2120 Sprocket



Dimension Diagram of 2120 Sprocket

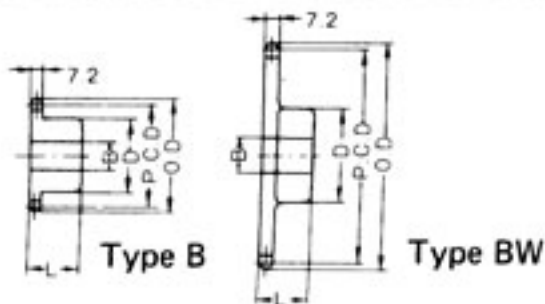
● Dimensions of 2120 Sprocket

(mm)

Number of Teeth	Number of Teeth in Action	Pitch Diameter P.C.D.	Outside Diameter O.D.	Type B, Type BW				Weight (kg)	Material
				Bore Dia. B		Hub			
				Stock	Max.	Dia. D	Width L		
11	5½	140.94	153	26	55	90	70	4.05	Type B S35C
12	6	152.40	165	26	60	100	70	5.85	
13	6½	163.97	177	26	65	105	70	6.35	
14	7	175.62	190	26	65	105	70	6.85	
15	7½	187.34	202	26	65	105	70	7.55	
16	8	199.12	214	26	65	115	80	10.6	
17	8½	210.94	227	26	65	115	80	10.7	
18	9	222.79	239	26	65	120	80	11.1	
19	9½	234.68	251	26	65	120	80	11.6	
20	10	246.59	263	26	65	120	80	12.0	
21	10½	258.52	276	26	65	120	80	12.4	
22	11	270.47	288	30	75	117	70	14.9	Type BW SS41
23	11½	282.43	300	30	75	117	70	15.9	
24	12	294.41	312	30	75	117	70	17.1	
25	12½	306.40	324	30	75	117	70	18.1	
26	13	318.41	337	30	75	117	70	19.1	
27	13½	330.42	349	30	75	117	70	20.1	
28	14	342.44	361	30	75	117	70	21.1	
29	14½	354.47	373	30	75	117	70	22.1	
30	15	366.50	385	30	75	127	75	24.5	

Notes: Sprockets with 11 to 21 teeth have hardened teeth surface.
Sprockets with 22 to 30 teeth are of welded SS41 steel.

●2042 Sprocket



Dimension Diagram of 2042 Sprocket

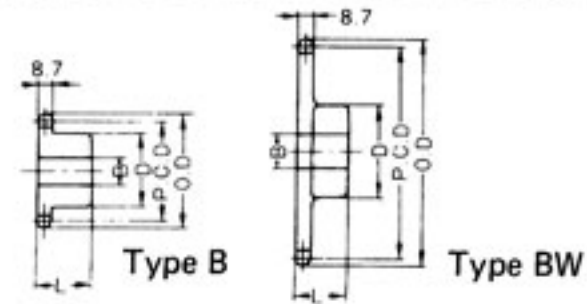
● Dimensions of 2042 Sprocket

(mm)

Number of Teeth	Pitch Diameter P.C.D.	Outside Diameter O.D.	Type B, Type BW				Weight (kg)	Material
			Bore Dia. B		Hub			
			Stock	Max.	Dia. D	Width L		
9	74.26	85	16	32	50	30	0.70	Type B S35C
10	82.19	93	20	35	56	40	0.98	
11	90.16	101	20	35	56	40	1.00	
12	98.14	110	20	35	56	40	1.10	
13	106.14	118	20	40	65	40	1.60	
14	114.15	126	20	40	65	40	1.70	
15	122.17	134	20	40	65	40	1.75	
16	130.20	142	20	40	65	40	2.00	
17	138.23	151	20	45	70	45	2.10	
18	146.27	159	20	45	70	45	2.15	
19	154.32	167	20	45	70	45	2.30	
20	162.37	175	20	45	70	45	2.50	Type BW SS41
21	170.42	183	20	55	87	45	2.60	
22	178.48	192	20	55	87	45	2.70	
23	186.54	200	20	55	87	45	2.80	
24	194.60	208	20	55	87	45	2.90	
25	202.66	216	20	55	87	45	3.00	
26	210.72	224	20	55	87	45	3.10	
28	226.86	241	20	55	87	45	3.20	
30	243.00	257	20	55	87	45	3.40	

Note: All are of no heat treatment.

●2052 Sprocket



Dimension Diagram of 2052 Sprocket

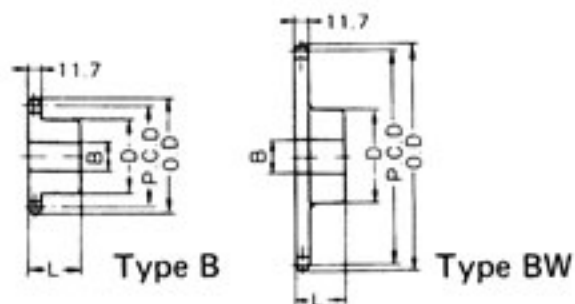
● Dimensions of 2052 Sprocket

(mm)

Number of Teeth	Pitch Diameter P.C.D.	Outside Diameter O.D.	Type B, Type BW				Weight (kg)	Material
			Bore Dia. B		Hub			
			Stock	Max.	Dia. D	Width L		
9	92.83	106	20	40	60	30	1.4	Type B S35C
10	102.74	116	20	45	70	45	1.9	
11	112.70	127	20	45	70	45	2.0	
12	122.67	137	20	45	70	45	2.2	
13	132.67	147	20	45	70	45	2.3	
14	142.68	157	20	45	70	45	2.4	
15	152.71	167	20	45	70	45	2.5	
16	162.74	178	20	45	70	45	2.7	
17	172.79	188	20	50	83	50	3.0	
18	182.84	198	20	55	87	55	4.0	
19	192.90	209	20	55	87	55	4.3	
20	202.96	219	20	55	87	55	4.4	Type BW SS41
21	213.03	229	20	55	87	55	4.6	
22	223.10	240	20	55	87	55	4.8	
23	233.17	250	20	55	87	55	4.9	
24	243.25	260	20	55	87	55	5.0	
25	253.32	270	20	55	87	55	5.5	
26	263.40	281	20	55	87	55	6.0	
28	283.57	301	20	55	87	55	6.8	
30	203.75	321	20	55	87	55	7.0	

Note: All are of no heat treatment.

●2062 Sprocket



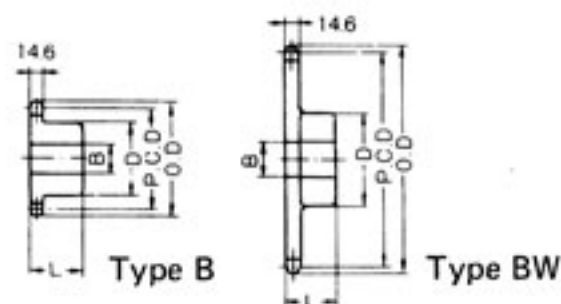
Dimension Diagram of 2062 Sprocket

● Dimensions of 2062 Sprocket (mm)

Number of Teeth	Pitch Diameter P.C.D.	Outside Diameter O.D.	Type B, Type BW				Weight (kg)	Material
			Bore Dia. B		Hub			
			Stock	Max.	Dia. D	Width L		
9	111.40	128	20	50	80	32	2.2	Type B S35C
10	123.29	140	26	50	80	45	2.4	
11	135.24	152	26	50	80	45	2.6	
12	147.21	165	26	50	80	45	2.8	
13	159.90	177	26	55	85	50	3.1	
14	171.22	190	26	55	85	50	3.7	
15	183.25	202	26	55	83	50	3.8	
16	195.29	214	26	55	83	50	4.1	
17	207.35	227	26	55	87	55	4.9	
18	219.41	239	26	55	87	55	5.3	
19	231.48	251	26	55	87	55	5.6	
20	243.55	263	26	55	87	55	6.0	Type BW SS41
21	255.63	276	26	55	87	55	6.4	
22	267.72	288	26	55	87	55	6.7	
23	279.80	300	26	55	87	55	7.3	
24	291.90	312	26	55	87	55	7.7	
25	303.99	324	26	55	87	55	8.6	
26	316.09	337	26	55	87	55	10.0	
28	340.29	361	26	55	87	55	10.9	
30	364.50	385	26	55	87	55	12.3	

Note: All are of no heat treatment.

●2082 Sprocket



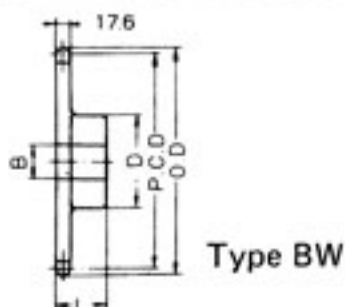
Dimension Diagram of 2082 Sprocket

● Dimensions of 2082 Sprocket (mm)

Number of Teeth	Pitch Diameter P.C.D.	Outside Diameter O.D.	Type B, Type BW				Weight (kg)	Material
			Bore Dia. B		Hub			
			Stock	Max.	Dia. D	Width L		
9	148.53	170	25	60	93	50	4.1	Type B S35C
10	164.39	186	25	60	93	50	5.0	
11	180.31	204	25	60	93	50	5.9	
12	196.28	220	25	60	93	50	6.8	
13	212.27	237	32	70	108	55	7.7	
14	228.30	253	32	70	108	55	8.6	
15	244.33	269	32	70	108	55	9.1	
16	260.39	286	32	70	108	55	10.1	
17	276.46	302	32	70	108	55	10.5	
18	292.55	319	32	70	108	55	11.8	
19	308.64	355	32	70	108	55	12.7	Type BW SS41
20	324.74	351	32	70	108	55	13.6	
21	340.84	368	32	70	108	60	14.1	
22	356.96	384	32	70	108	60	14.5	
23	373.07	400	32	70	108	60	15.5	
24	389.19	416	32	70	108	60	17.7	
25	405.32	433	32	70	108	60	18.6	
26	421.45	449	32	70	108	60	19.5	
28	453.72	481	32	70	108	60	20.5	
30	485.99	514	32	70	108	60	21.4	

Note: All are of no heat treatment.

●2102 Sprocket



Dimension Diagram of 2102 Sprocket

● Dimensions of 2102 Sprocket (mm)

Number of Teeth	Pitch Diameter P.C.D.	Outside Diameter O.D.	Type BW				Weight (kg)	Material
			Bore Dia. B		Hub			
			Stock	Max.	Dia. D	Width L		
11	225.39	254	32	70	108	55	7.5	Type BW SS41
12	245.34	275	32	70	108	55	8.5	
13	265.34	296	32	70	108	55	9.5	
14	285.37	316	32	70	108	55	10.7	
15	305.42	337	32	70	108	55	11.9	
16	325.49	357	32	70	108	60	13.7	
17	345.58	378	32	70	108	60	15.1	
18	365.68	398	32	70	108	60	16.6	
19	385.79	419	32	70	108	60	18.2	
20	405.92	439	32	70	108	60	19.9	
21	426.05	459	32	70	108	60	21.6	
22	446.20	480	32	70	108	60	23.5	
23	466.34	500	32	70	108	60	25.4	
24	486.49	520	32	70	108	60	27.4	
25	506.65	541	32	70	108	60	29.5	
26	526.81	561	32	70	108	60	31.7	
28	567.14	602	32	70	108	60	36.3	
30	607.49	642	32	70	108	60	46.3	

Note: All are of no heat treatment.