

CONVEYOR BELTING

APPLICATIONS:

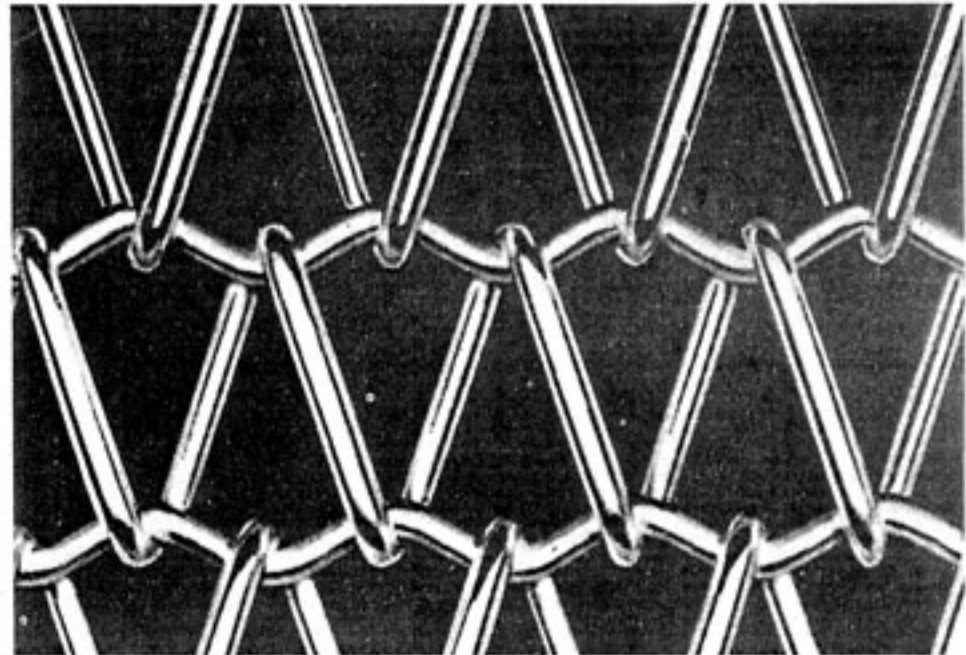
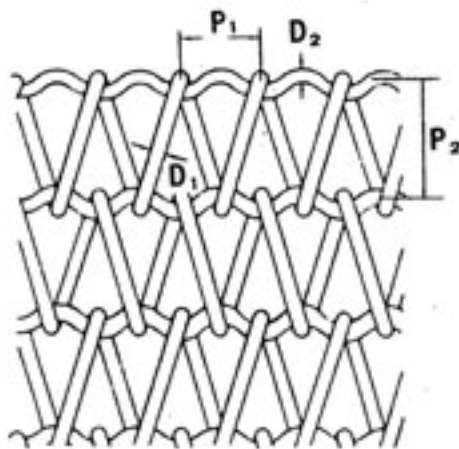
FREEZING FOOD MACHINERY, CANNED FOOD MACHINERY SEA FOOD MACHINERY, CONTINUOUS BAKING MACHINERY, HEAT TREATMENT MACHINERY, GLASS MACHINERY, GENERAL PURPOSE CONVEYORS, SPECIAL CONVEYORS ETC.

MATERIALS:

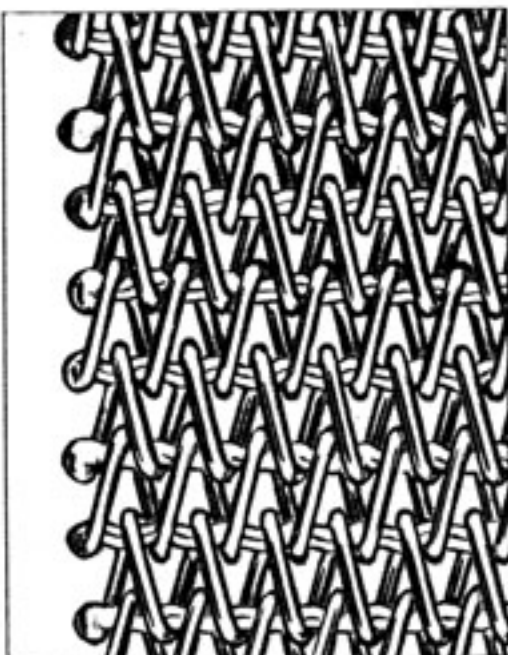
SUS 304 # (CORROSION RESISTANCE), SUS 316 # (ACID RESISTANCE OR ALKALI RESISTANCE), SUS 310S (HEAT RESISTANCE), SOFT STEEL WIRE, ZINCED STEEL WIRE AND OTHER SPECIFIED WIRE.

BELT SELECTION:

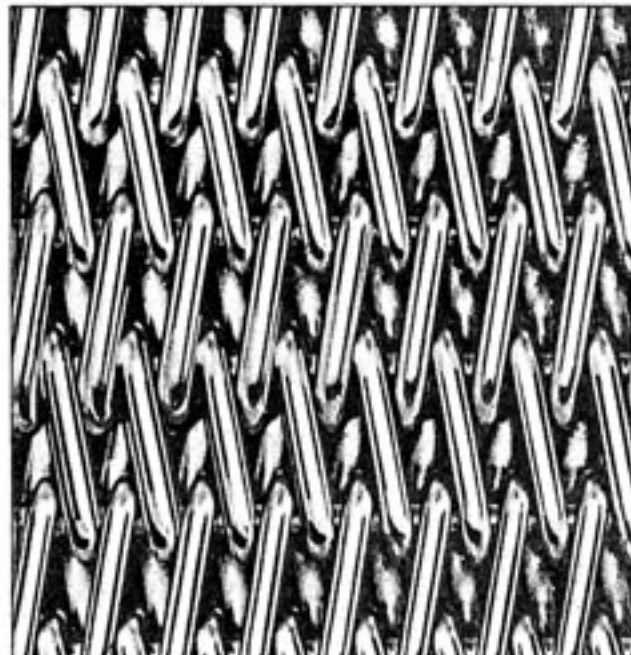
BALANCED BELT



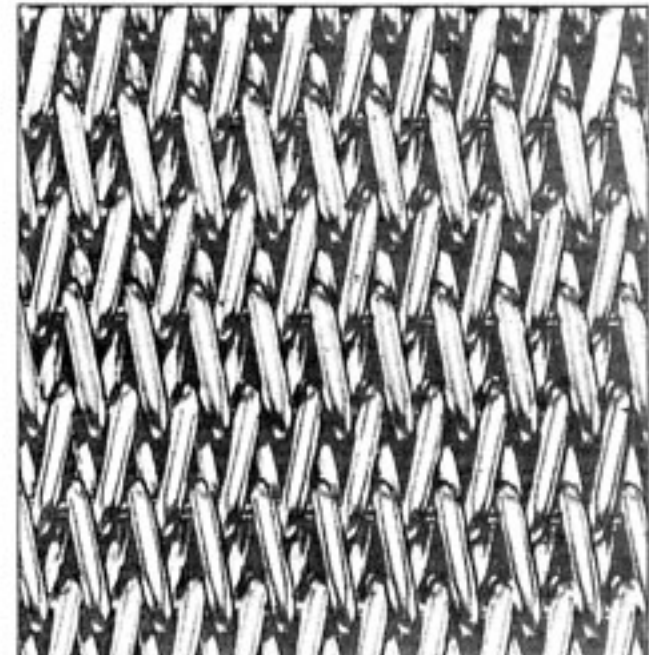
JE-1101



JE-1102

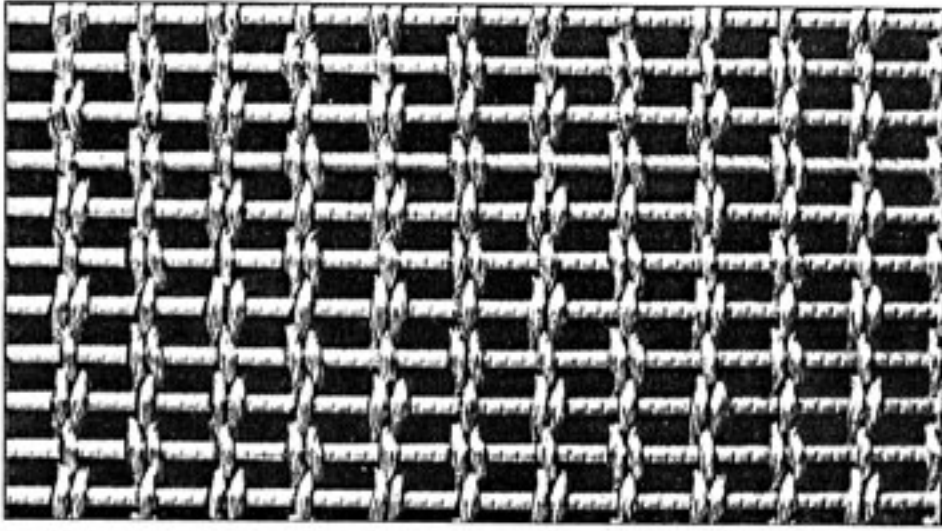


JE-1103



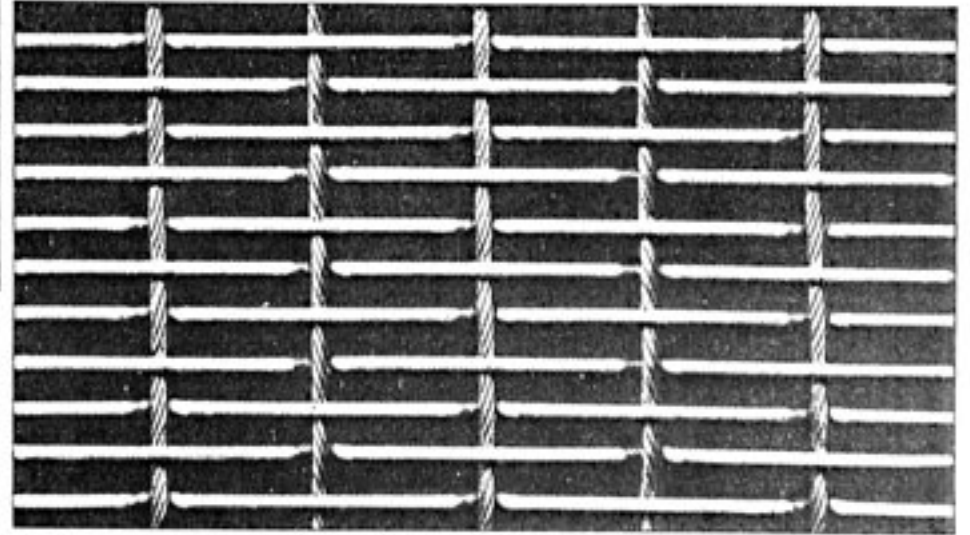
JE-1104

WOVEN BELT

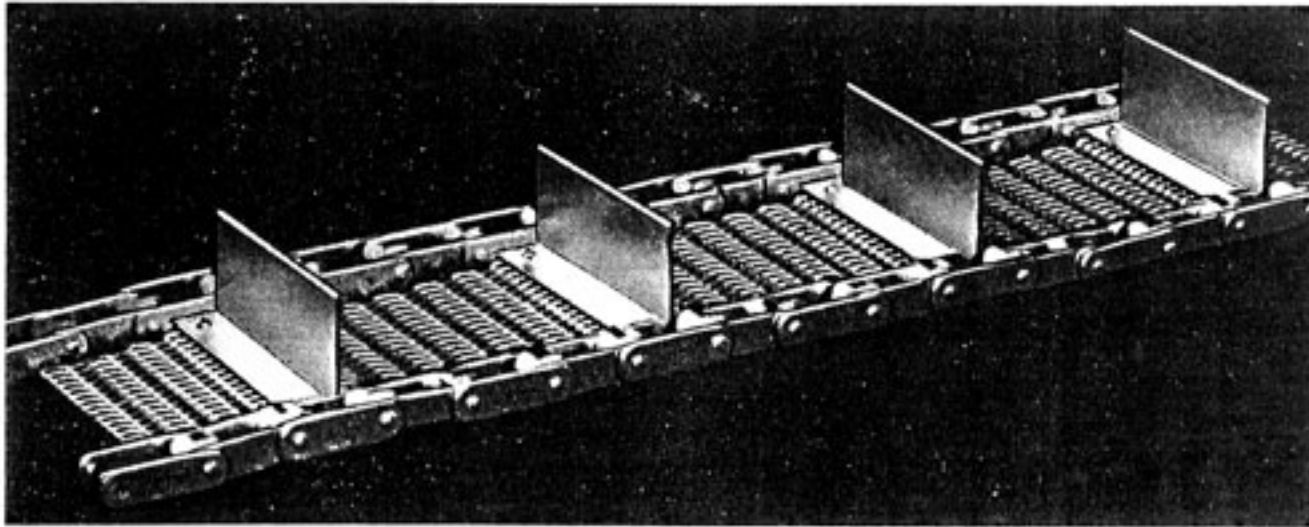


JE-1501

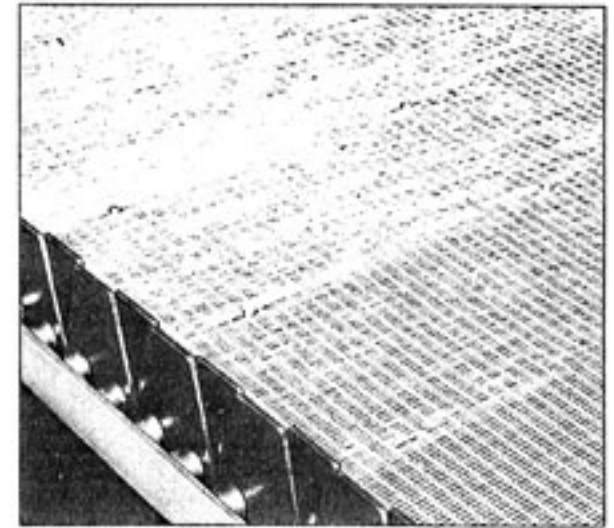
JE-1502



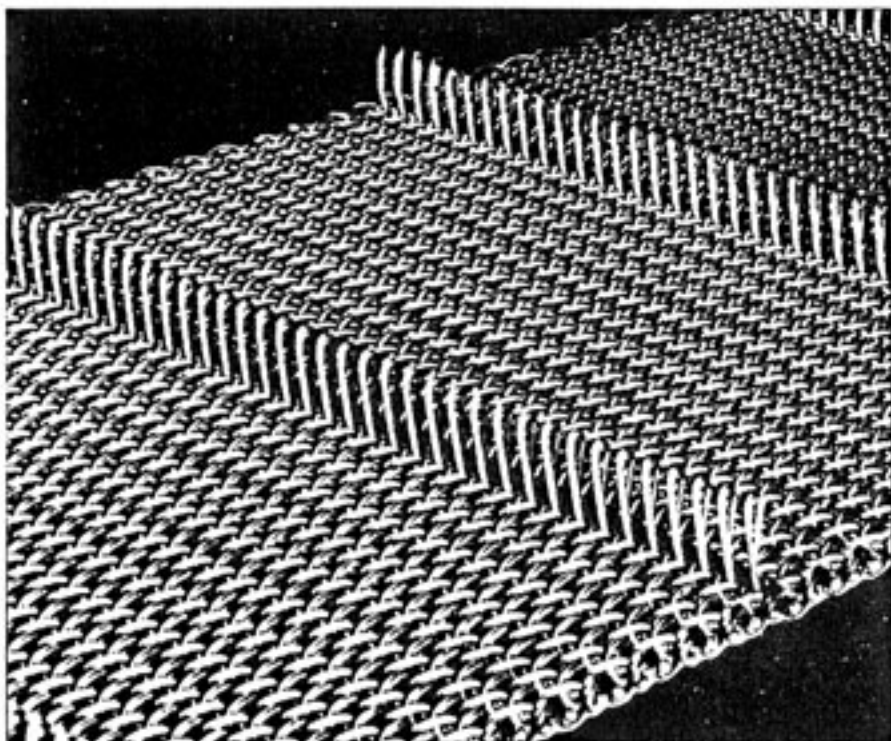
SPECIAL PROCESS BELT



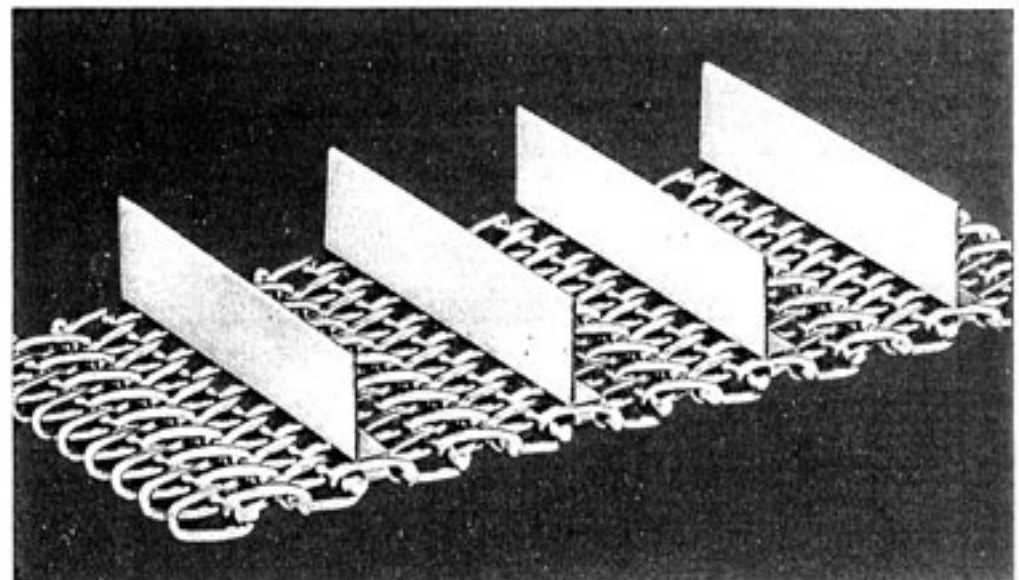
JE-1601



JE-1602

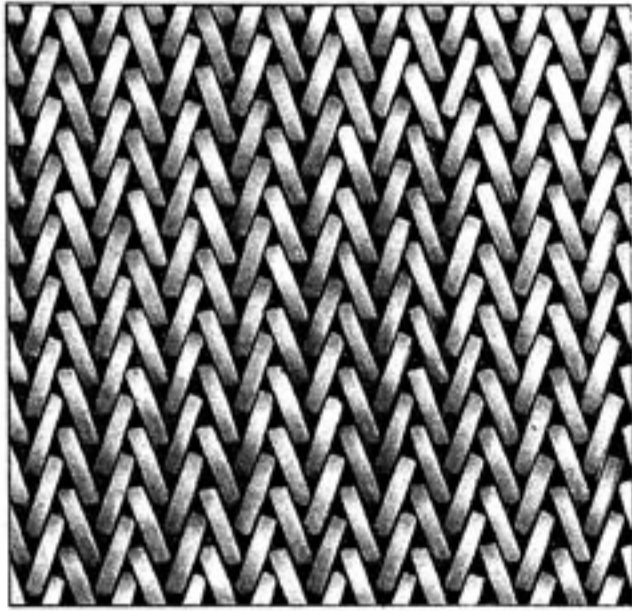


JE-1603

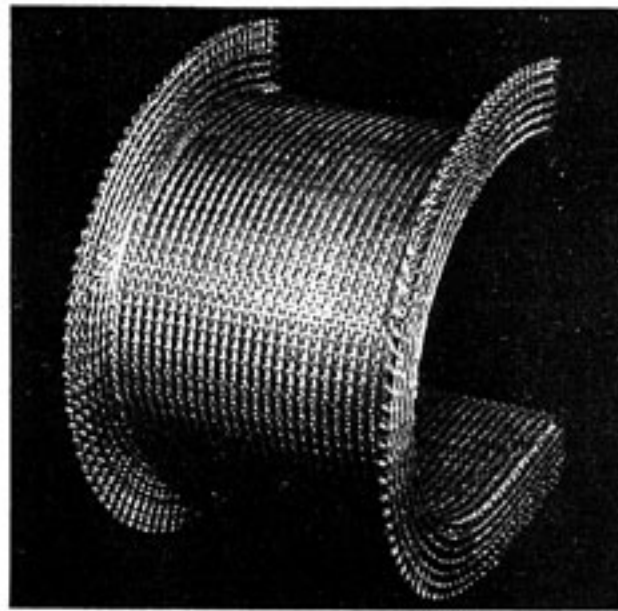


JE-1604

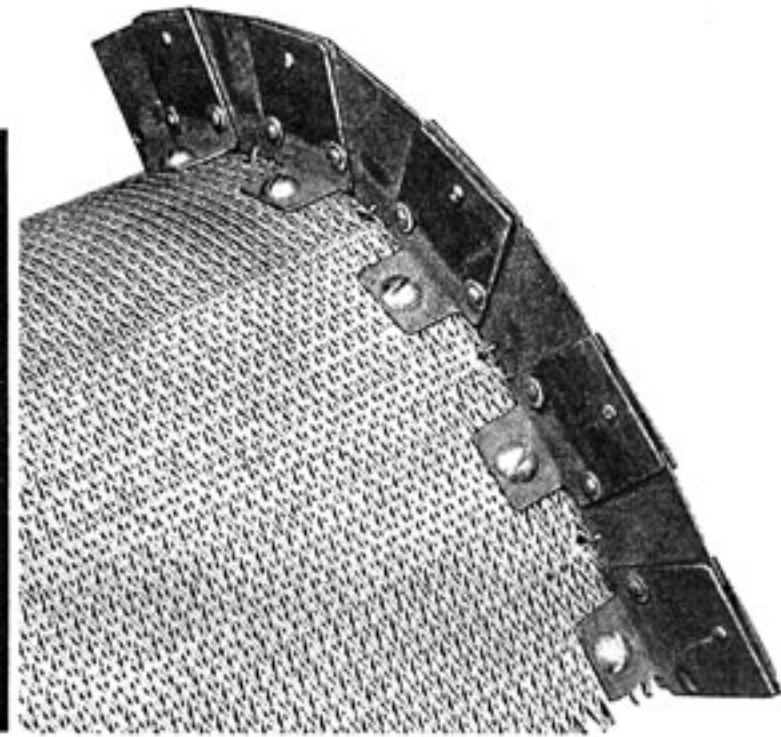
CORMEL BELT



JE-1301



JE-1302



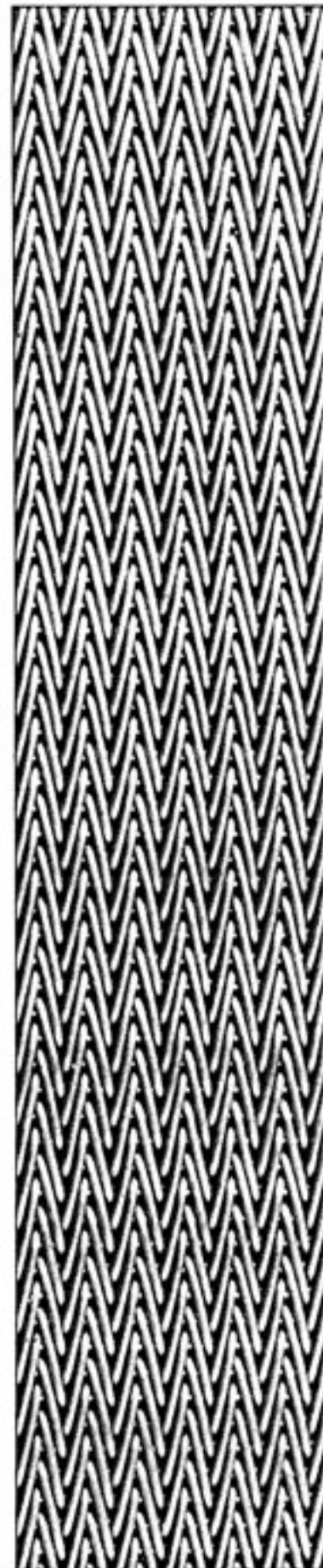
JE-1303



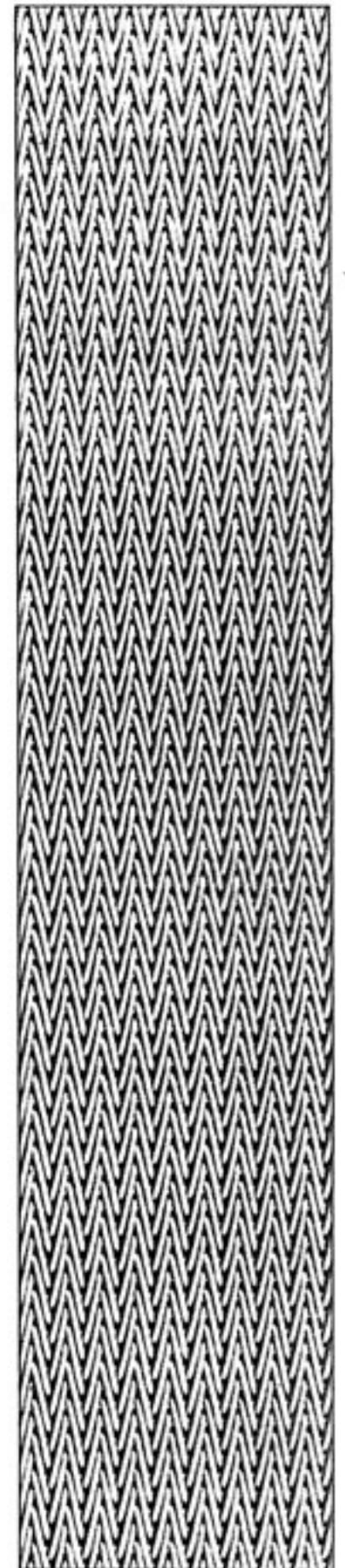
JE-1304



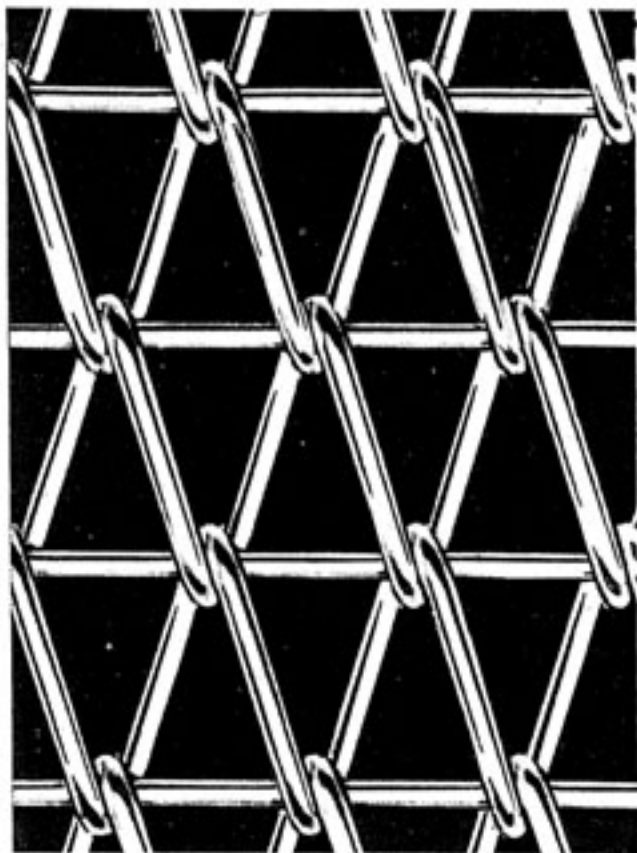
JE-1305



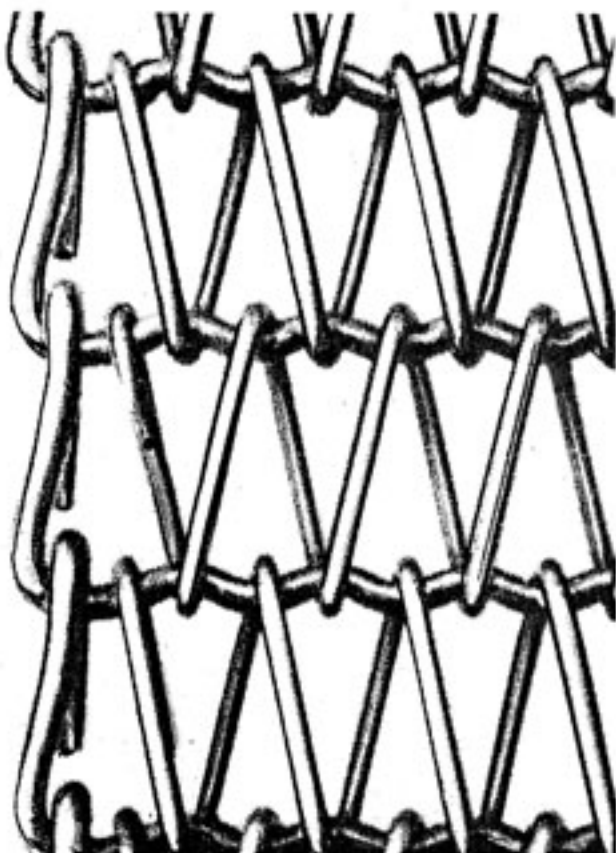
JE-1306



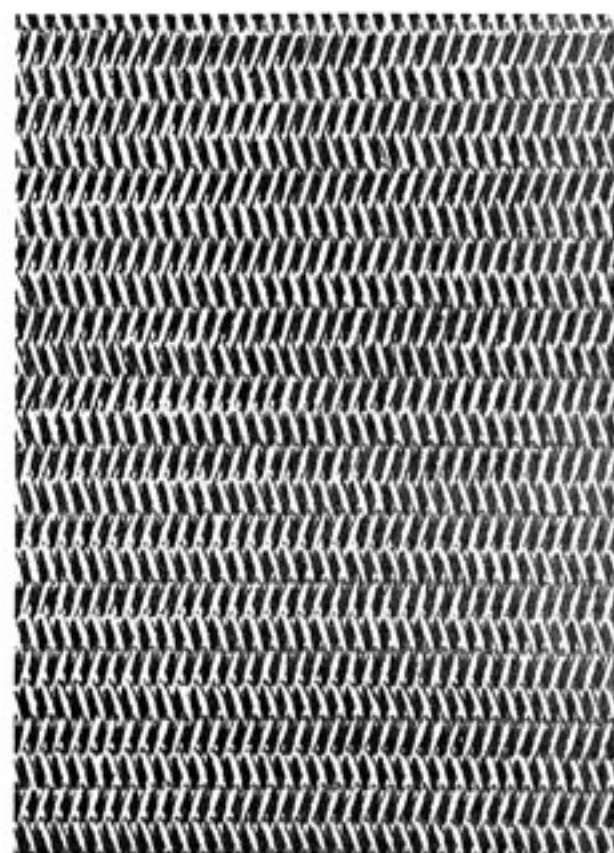
JE-1307



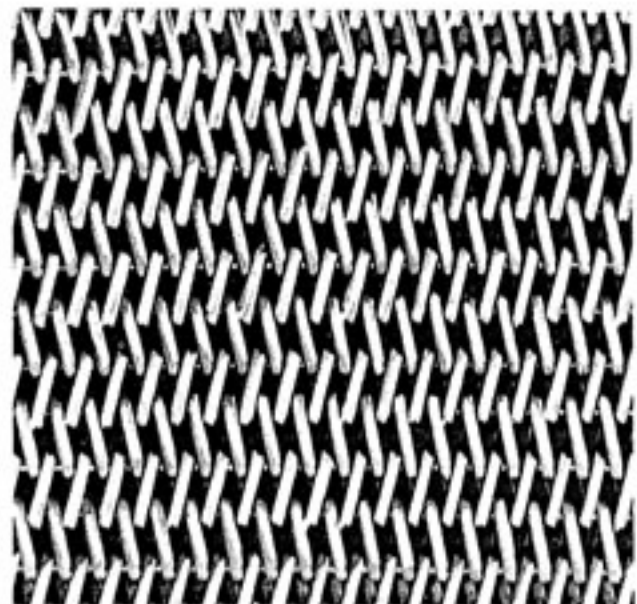
JE-1105



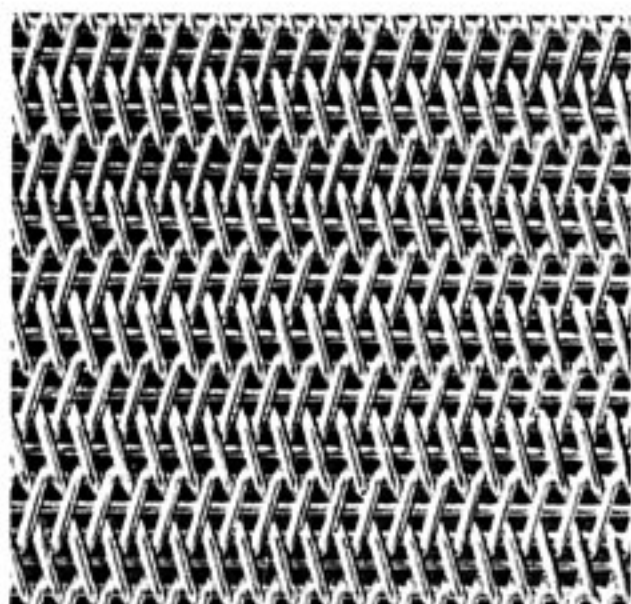
JE-1106



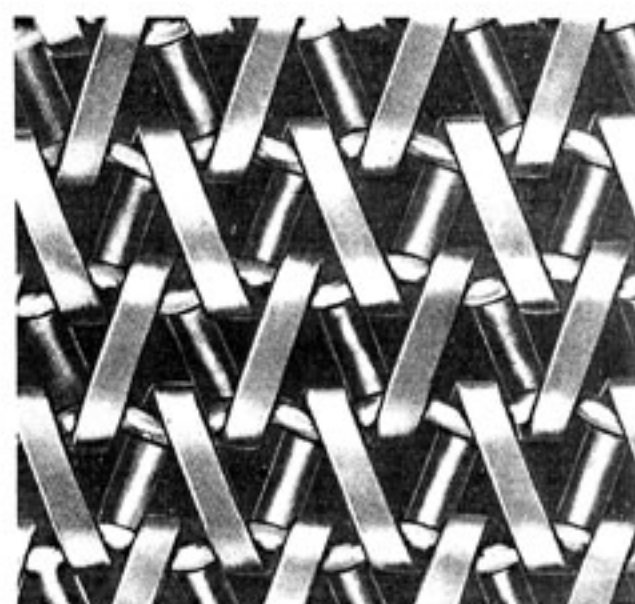
JE-1107



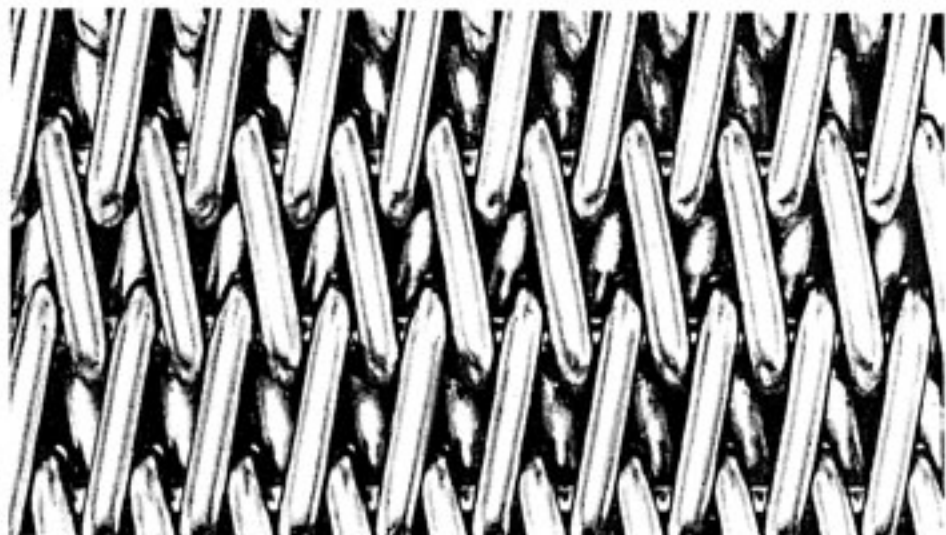
JE-1108



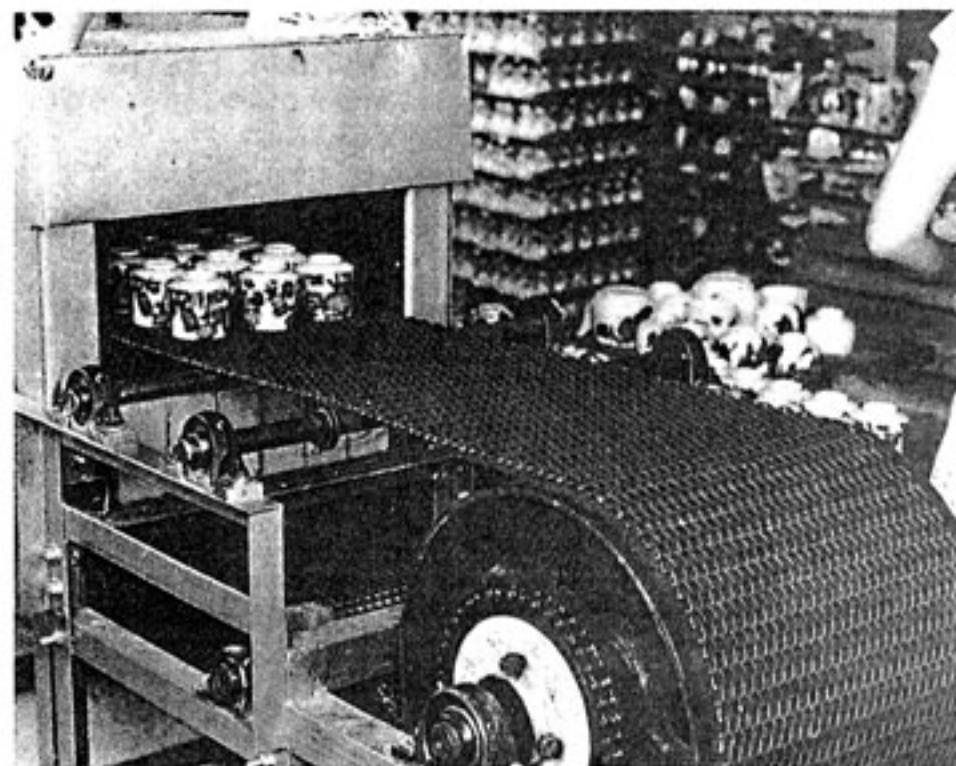
JE-1109



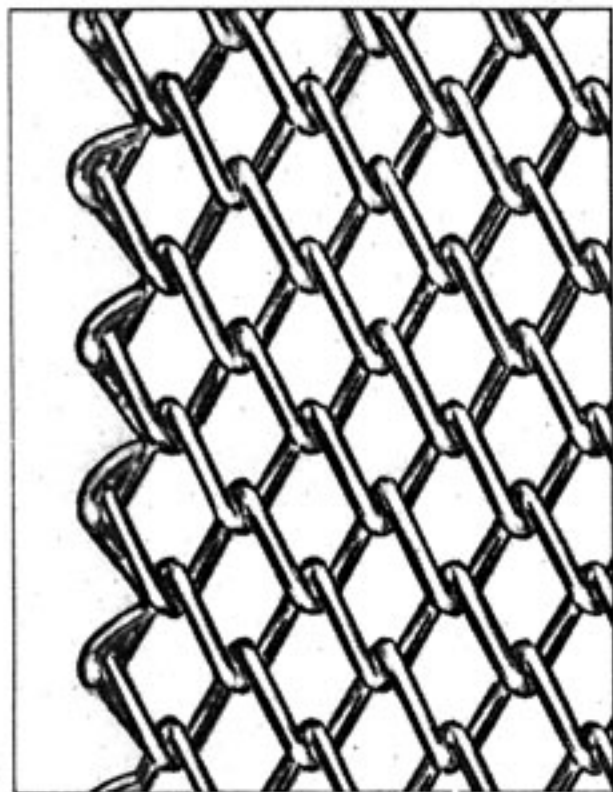
JE-1110



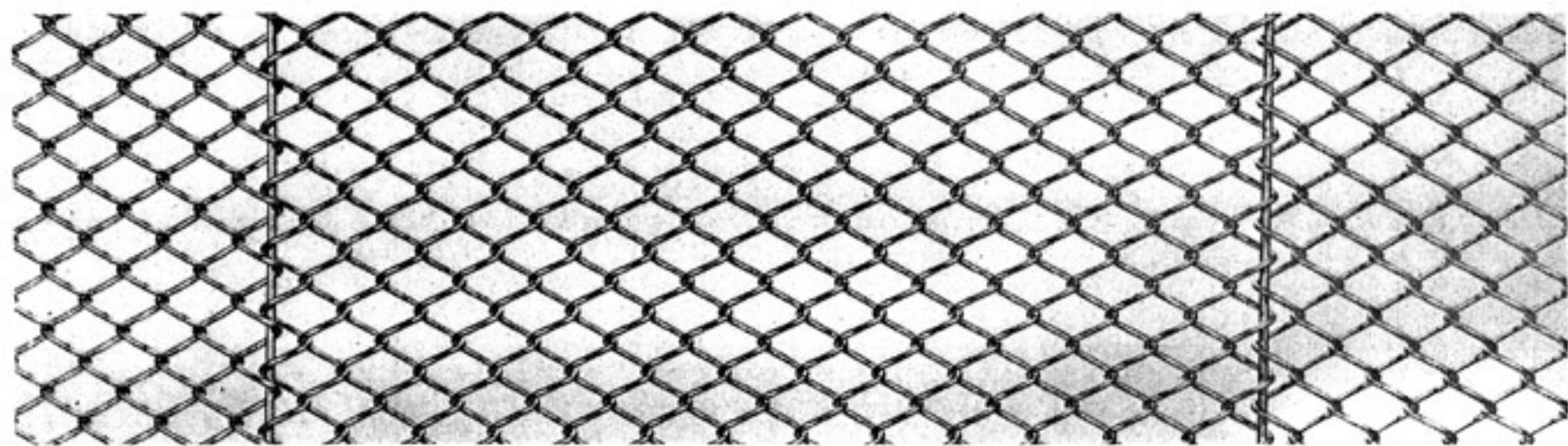
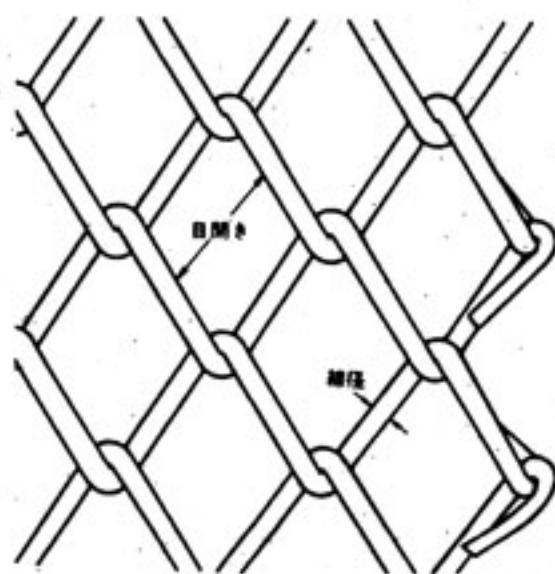
JE-1121



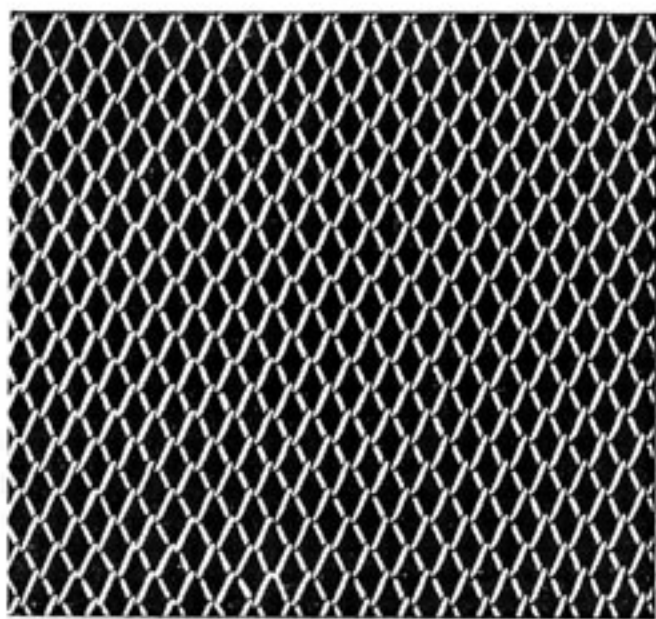
ONE DIRECTION BELT



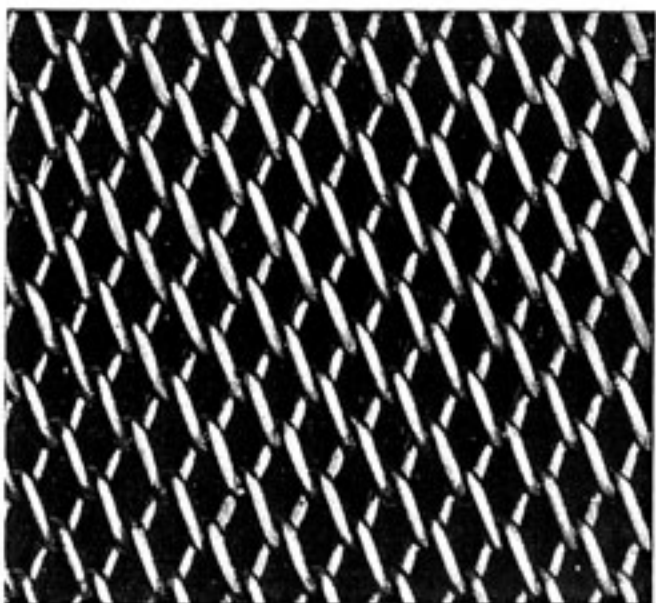
JE-1201



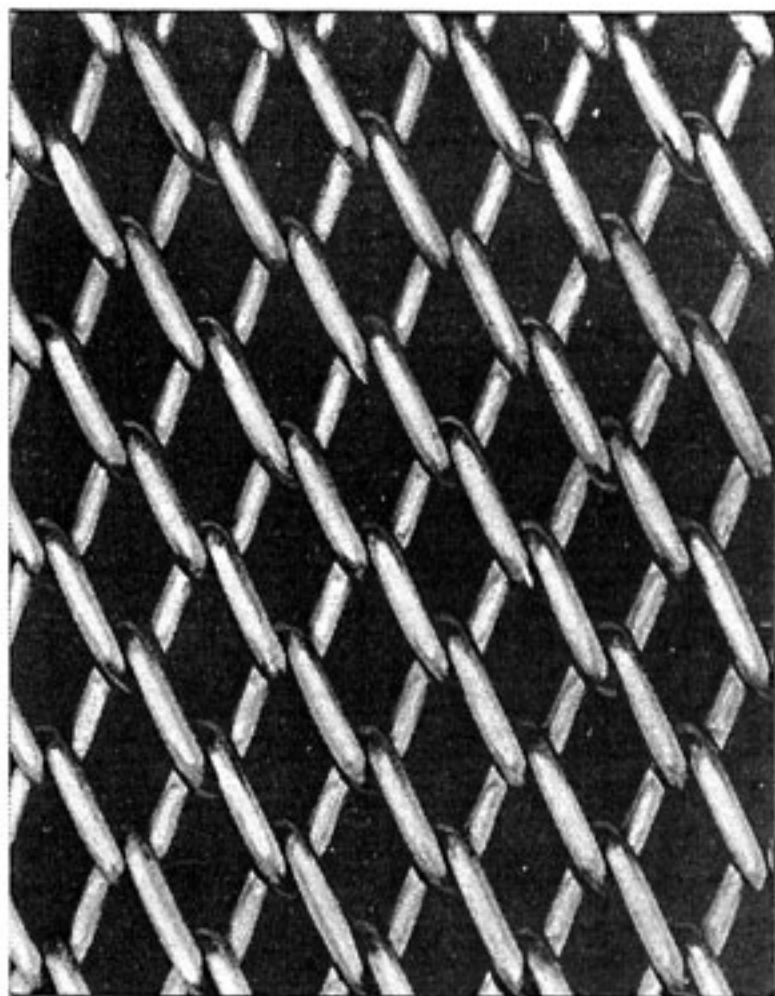
JE-1202



JE-1203

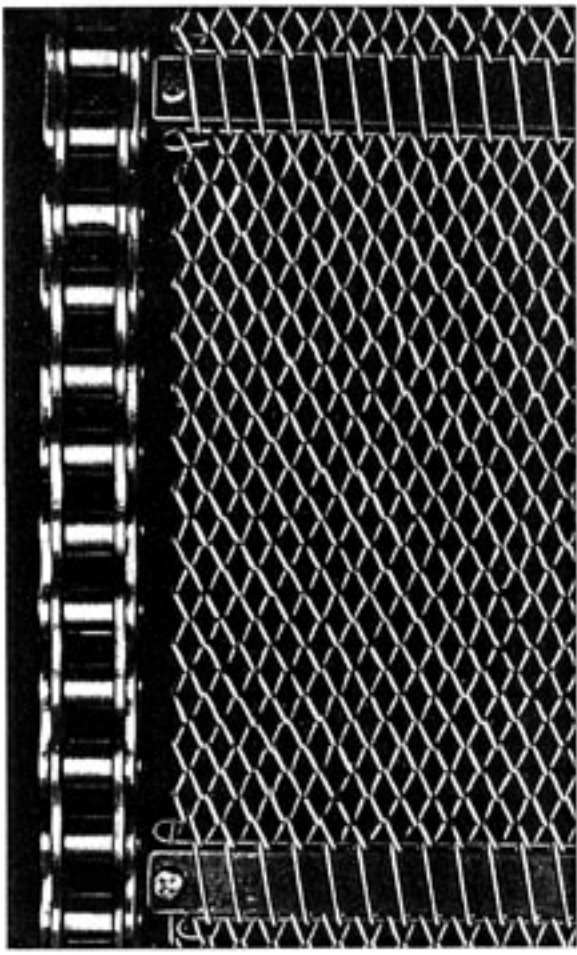


JE-1204

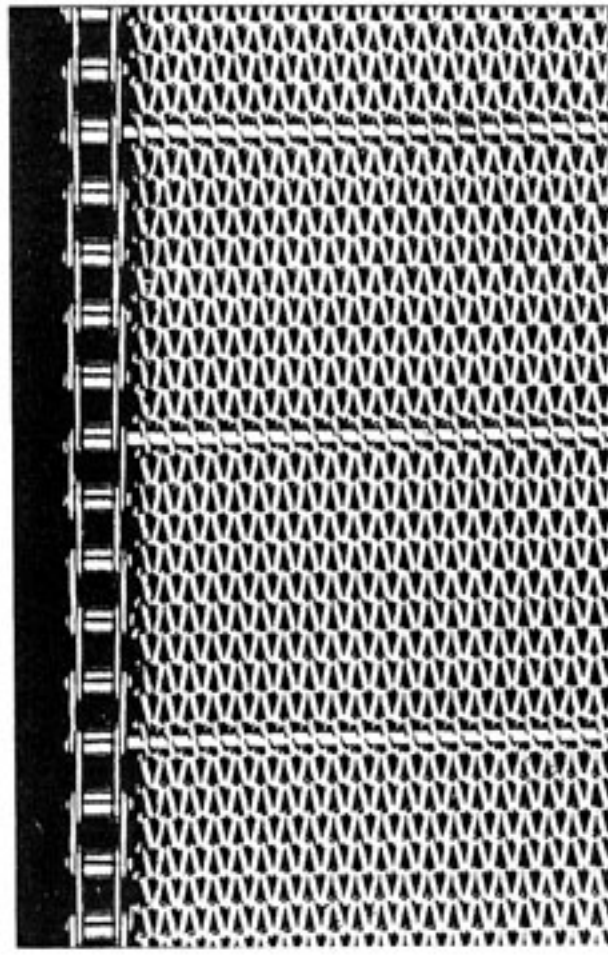


JE-1205

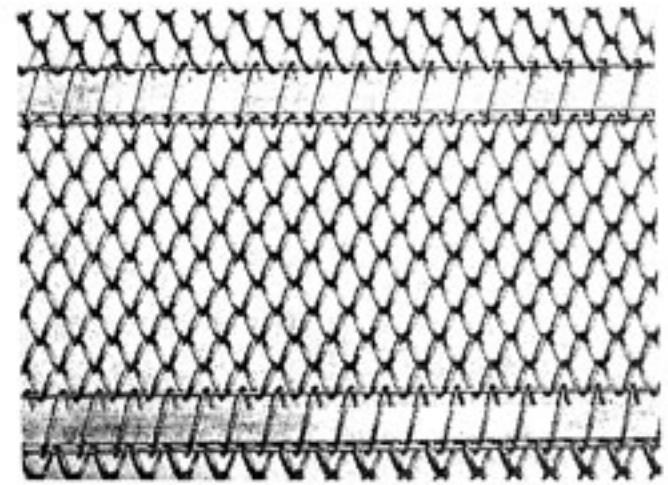
CHAIN BEIT



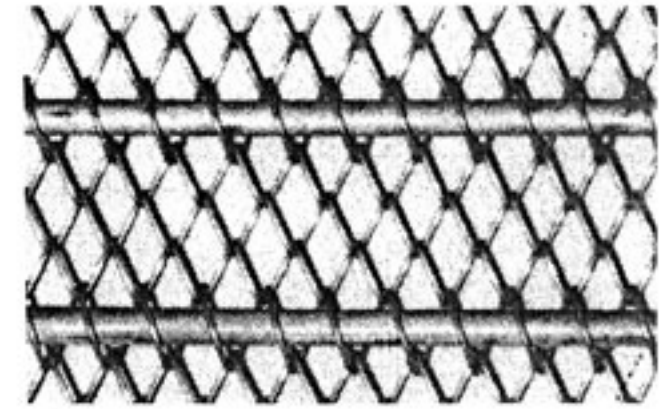
JE-1401



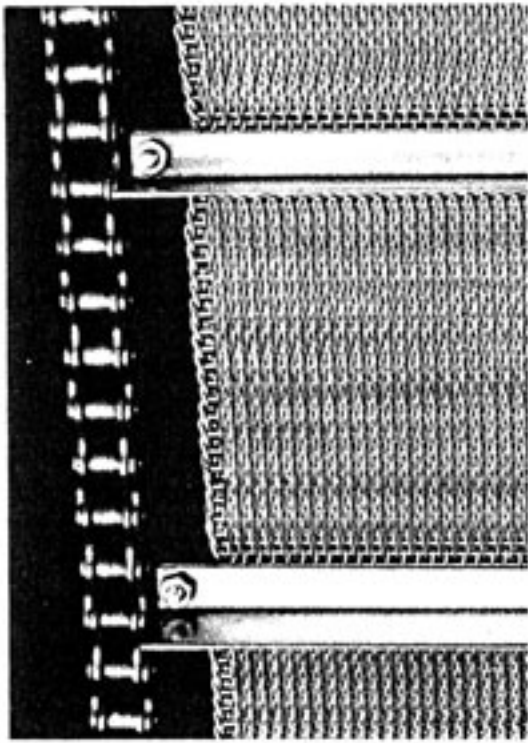
JE-1402



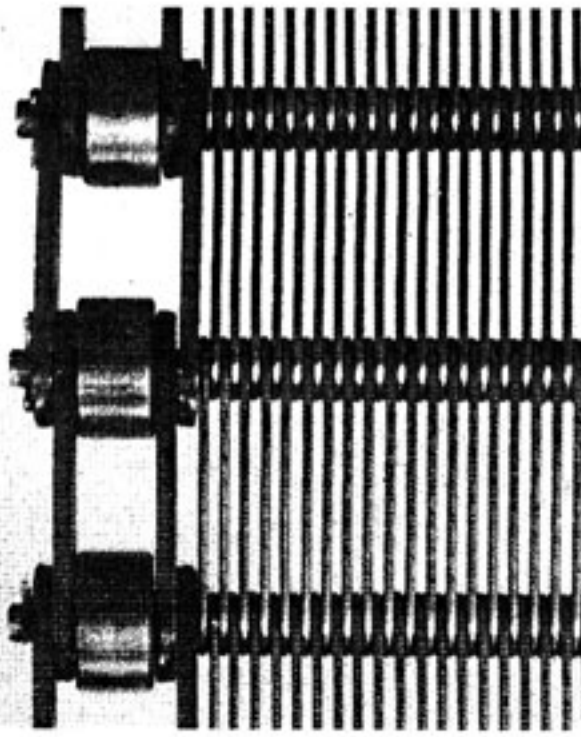
JE-1403



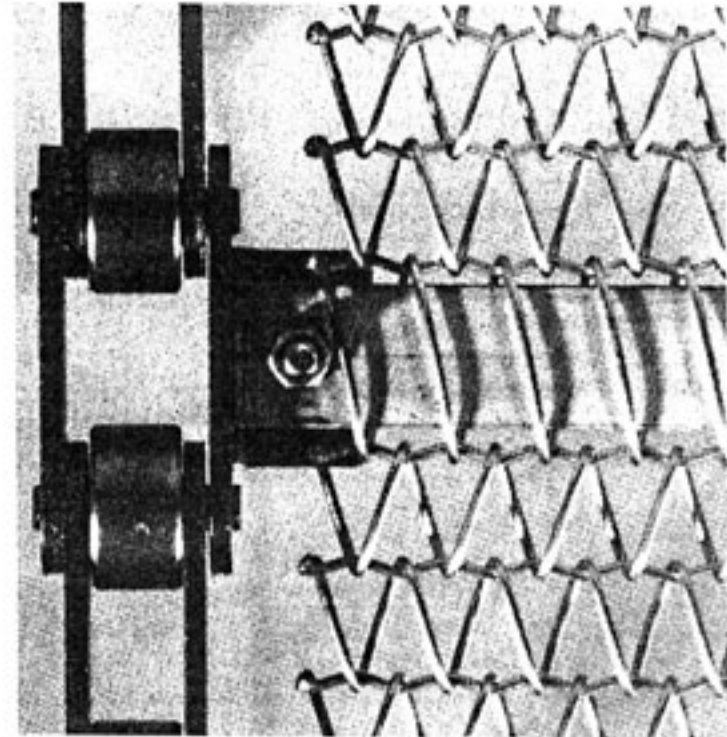
JE-1404



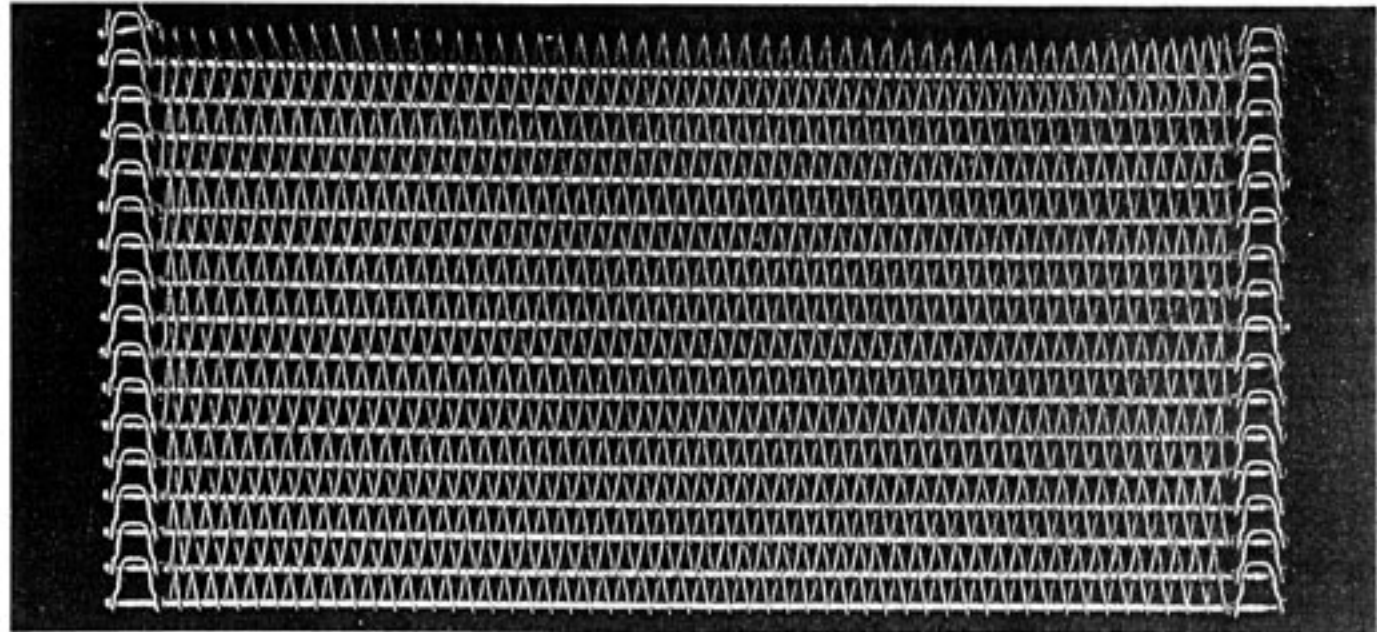
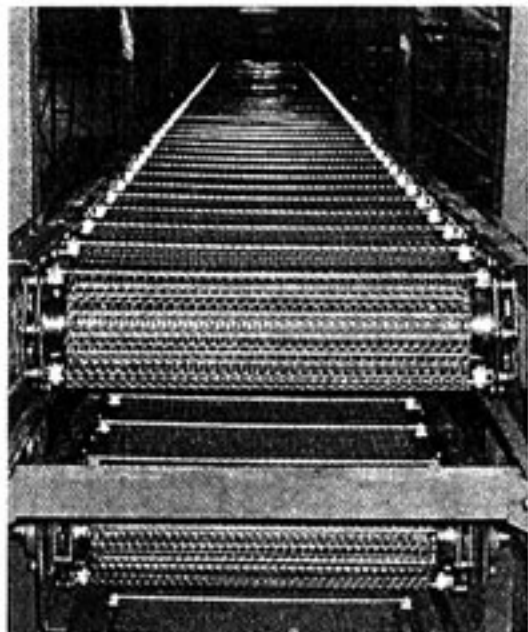
JE-1405



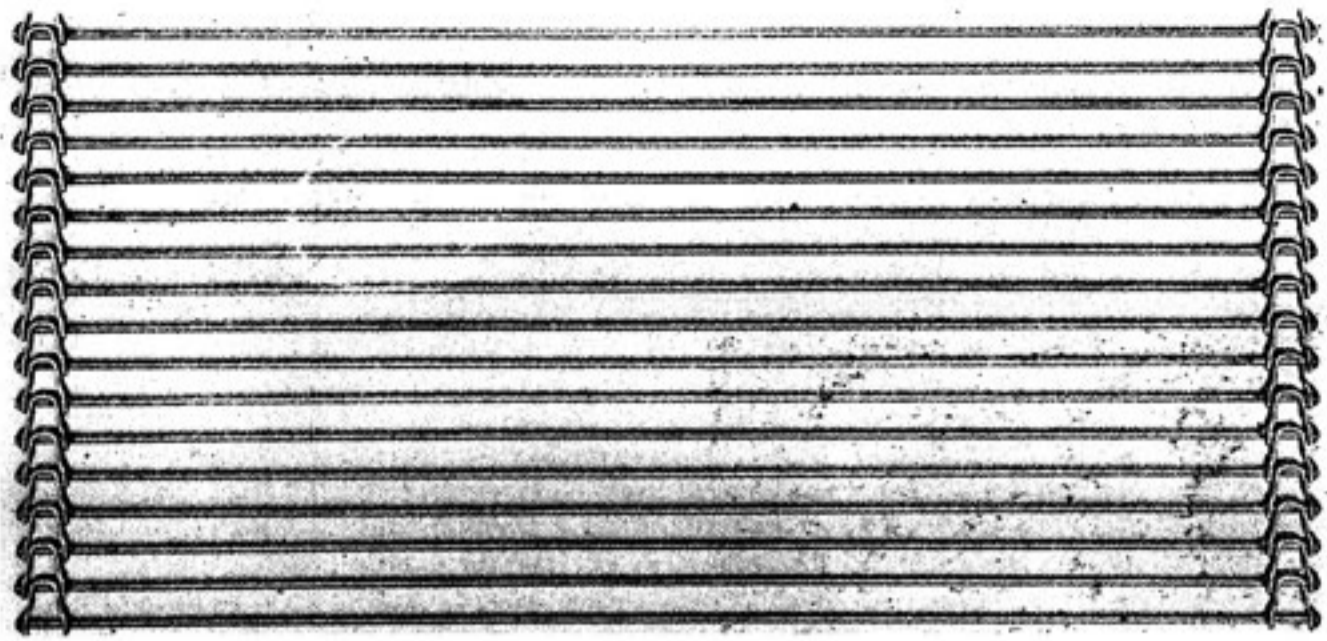
JE-1406



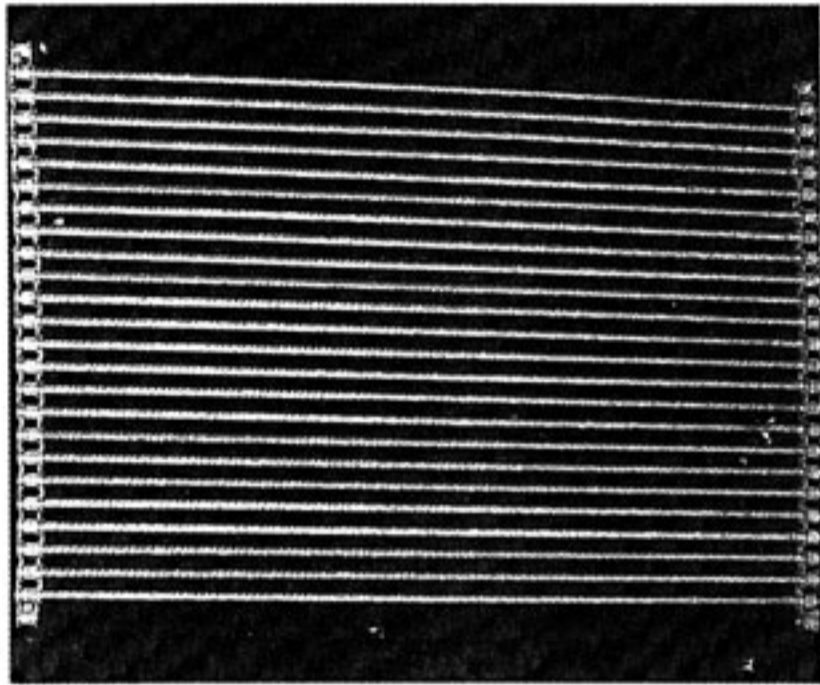
JE-1407



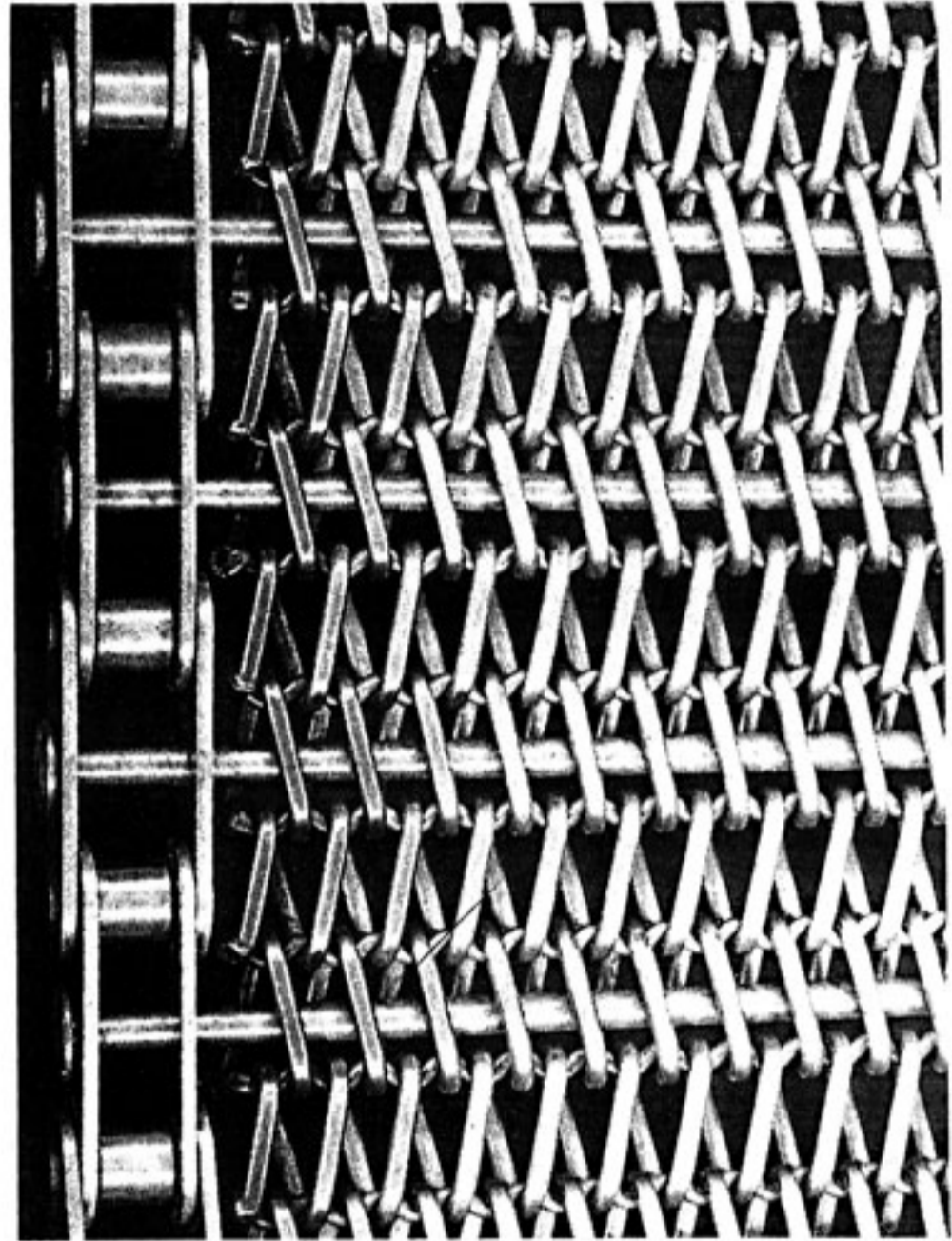
JE-1408



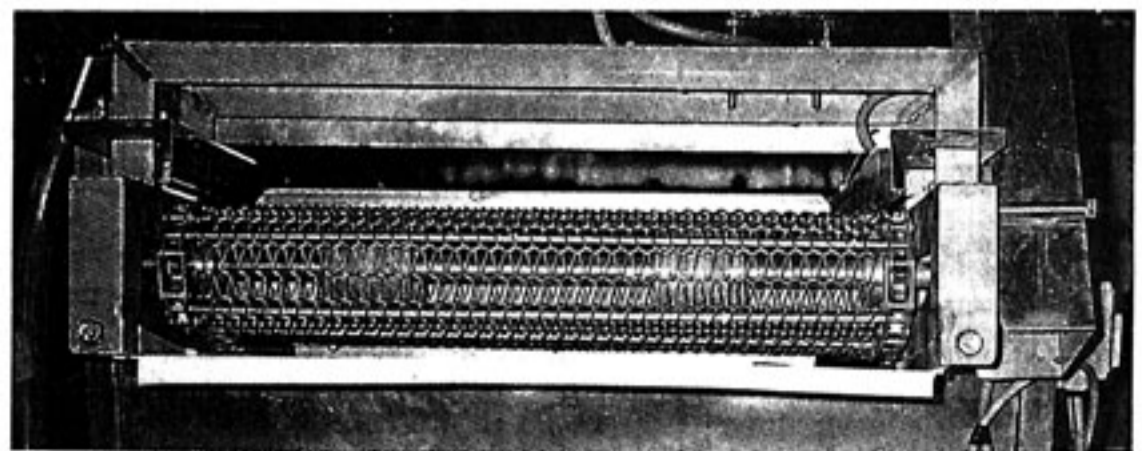
JE-1409

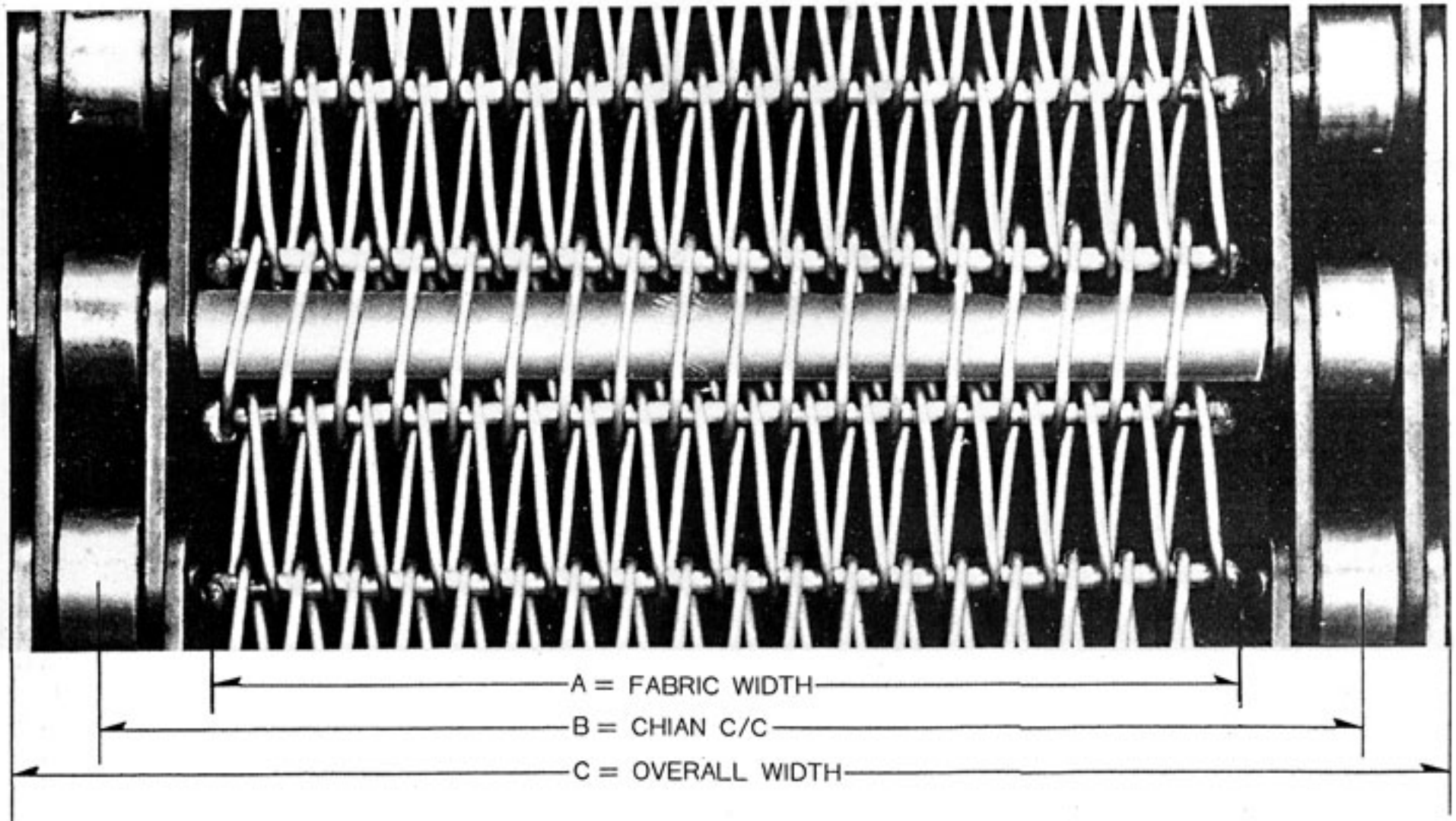
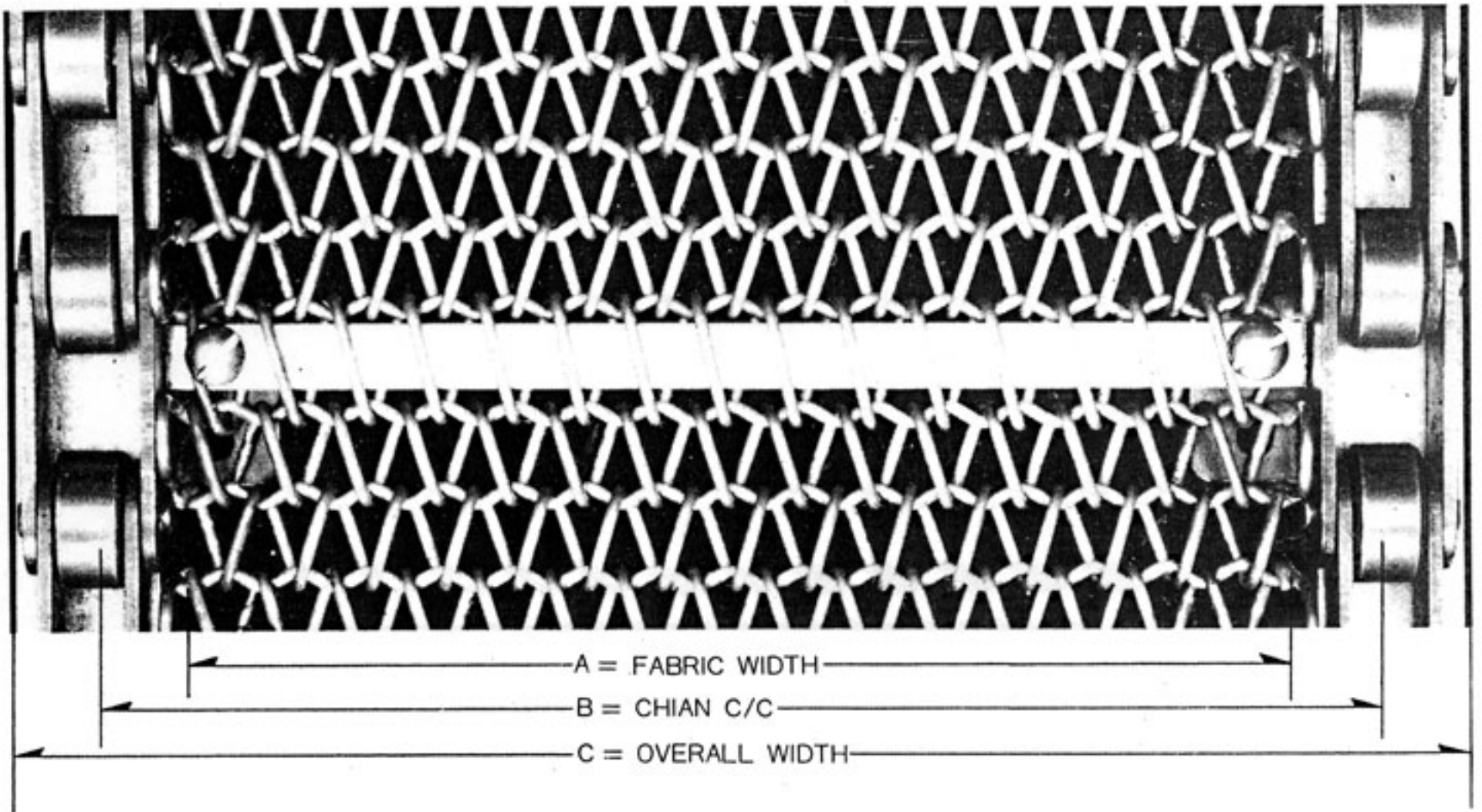


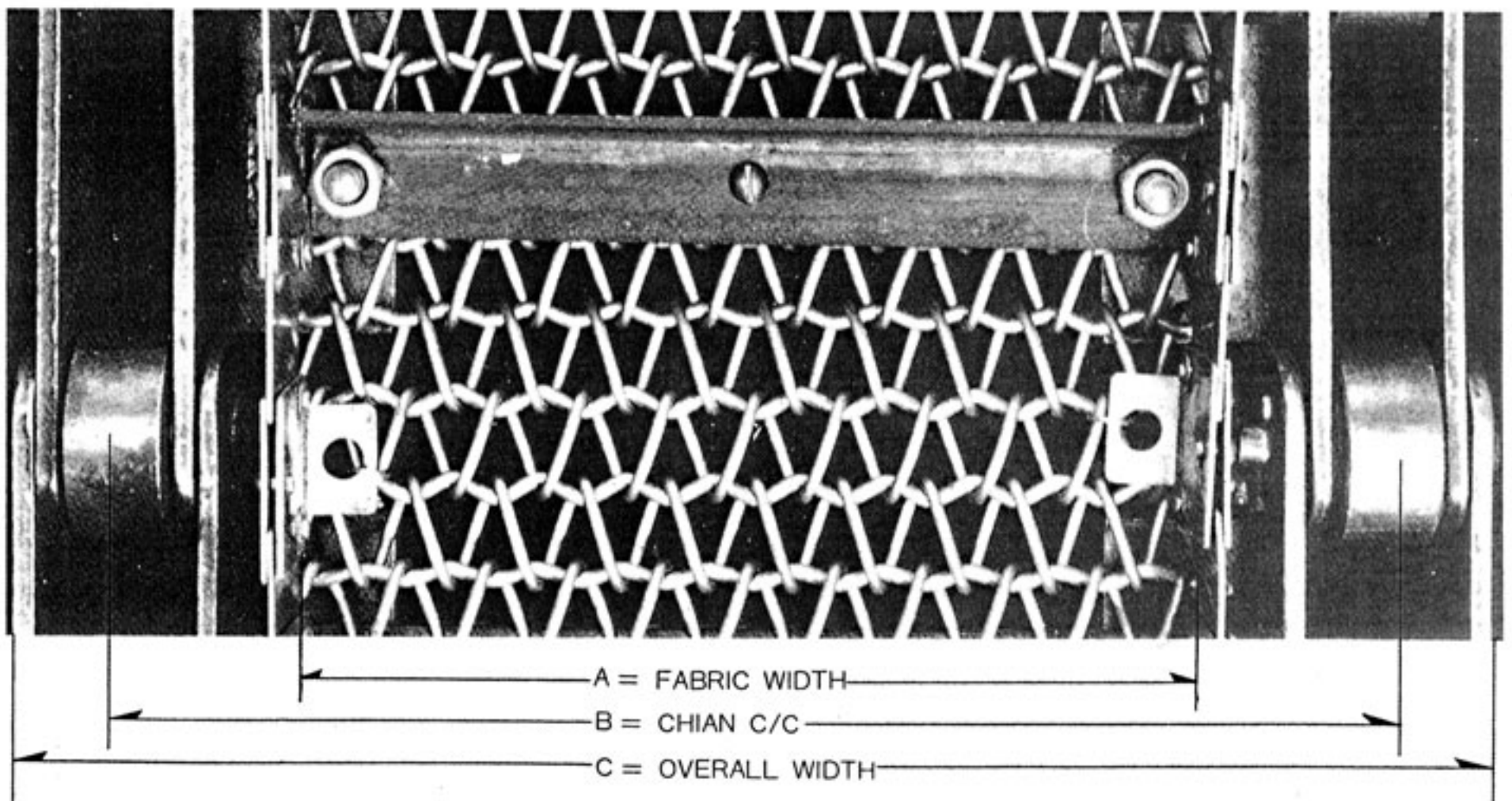
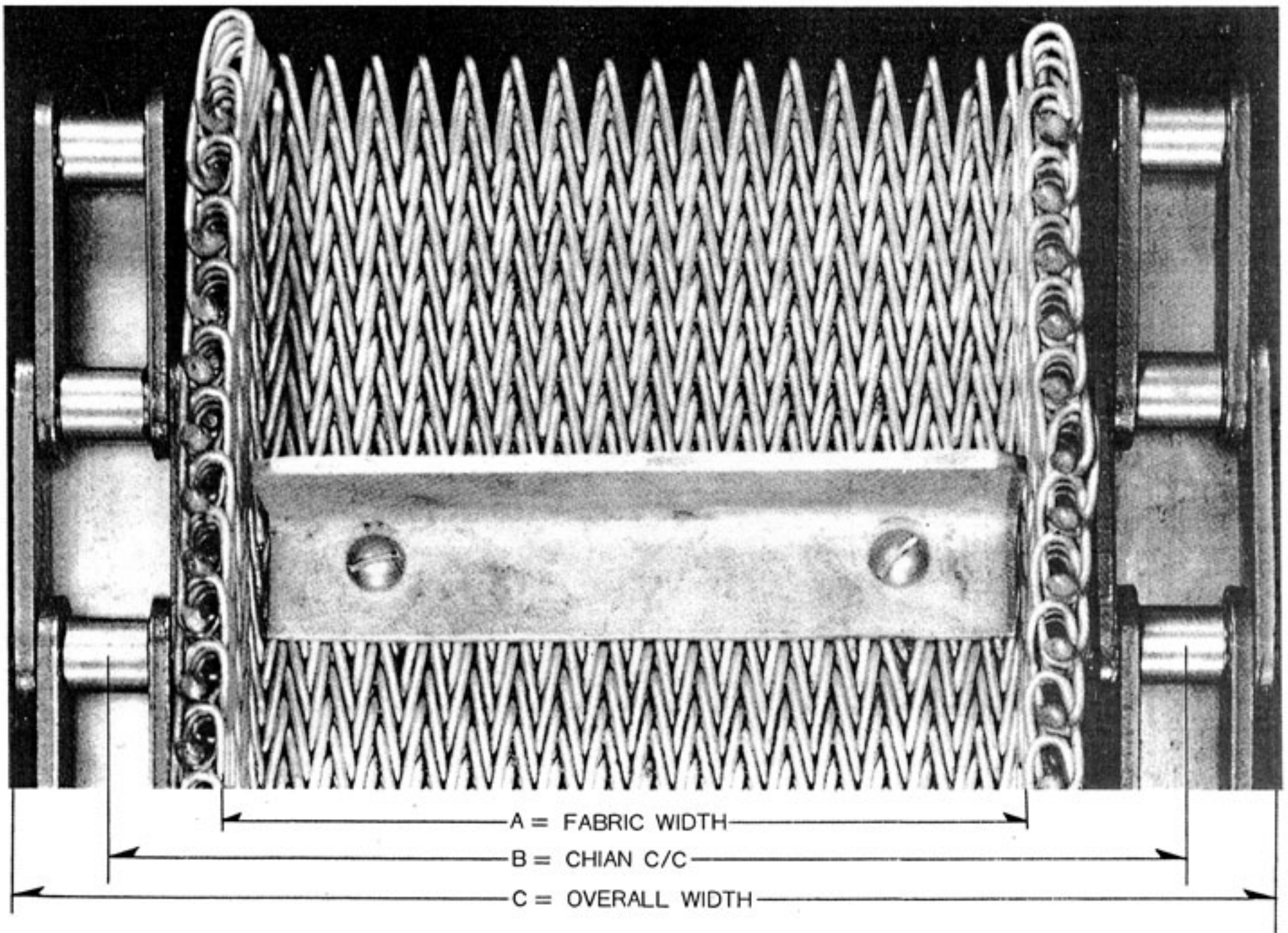
JE-1410



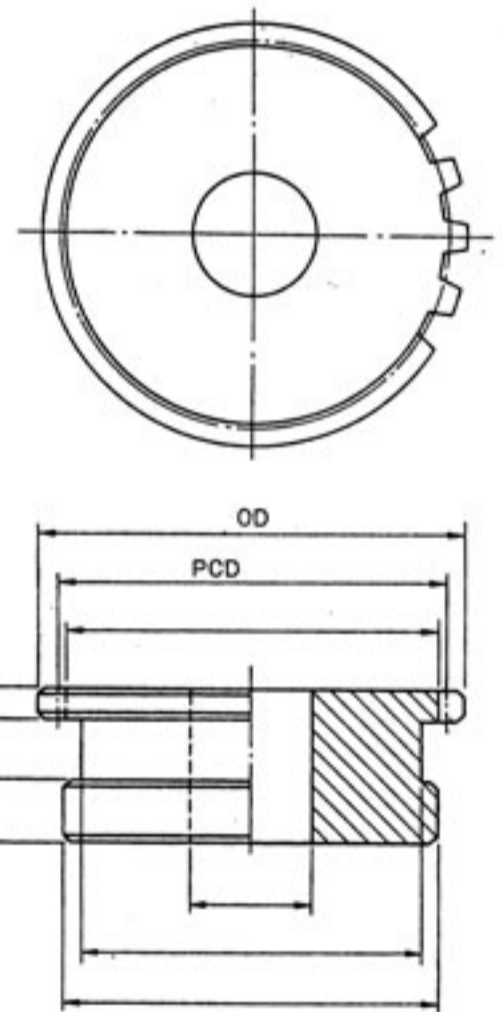
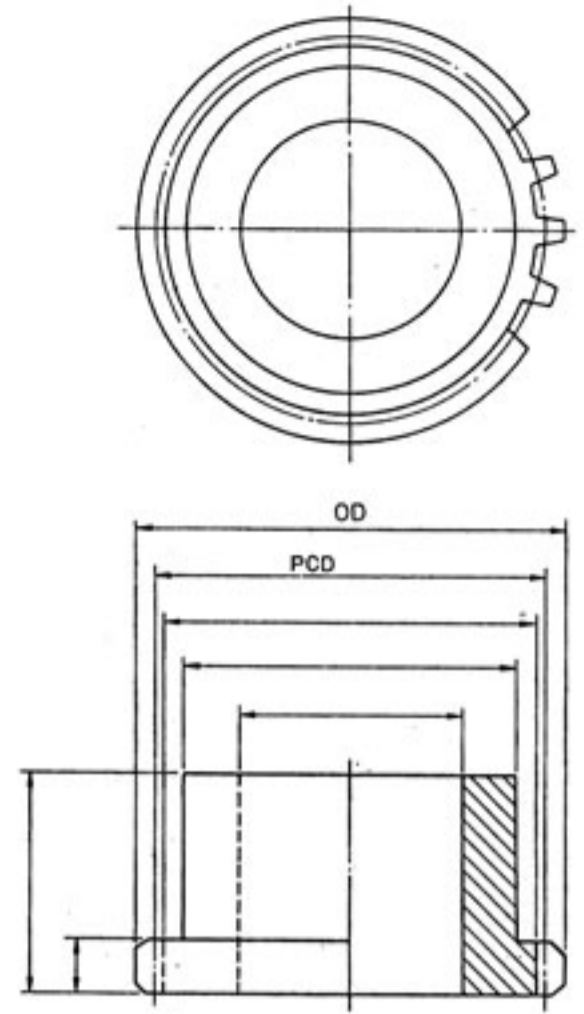
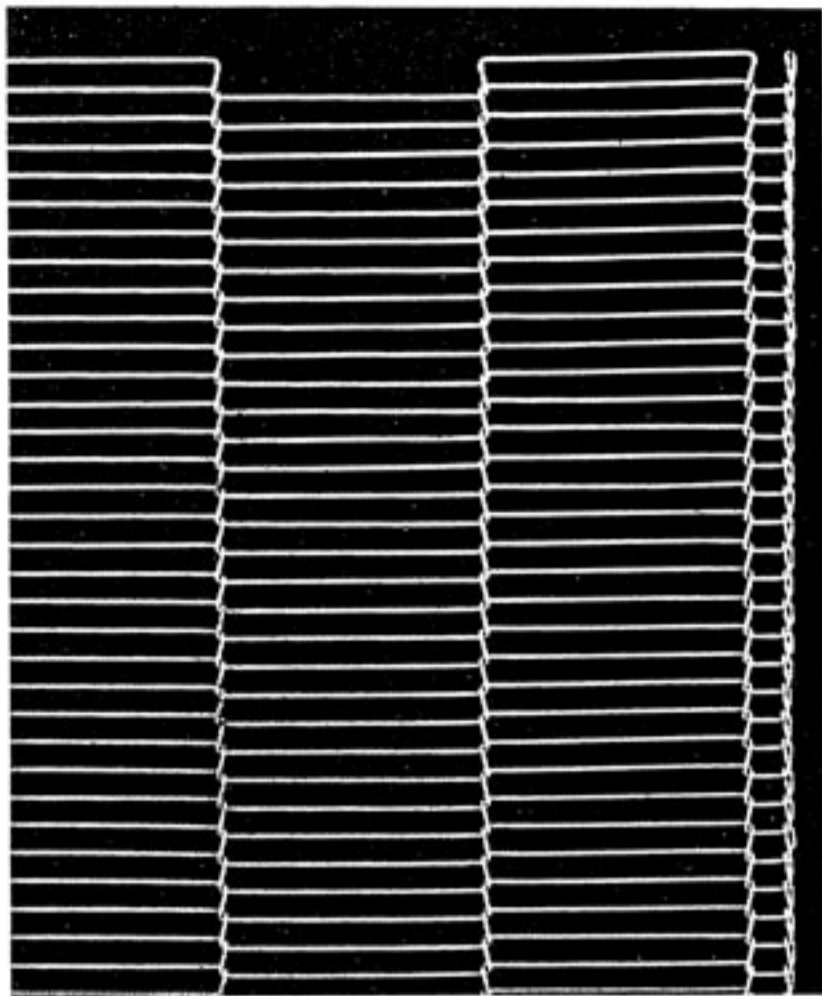
JE-1411



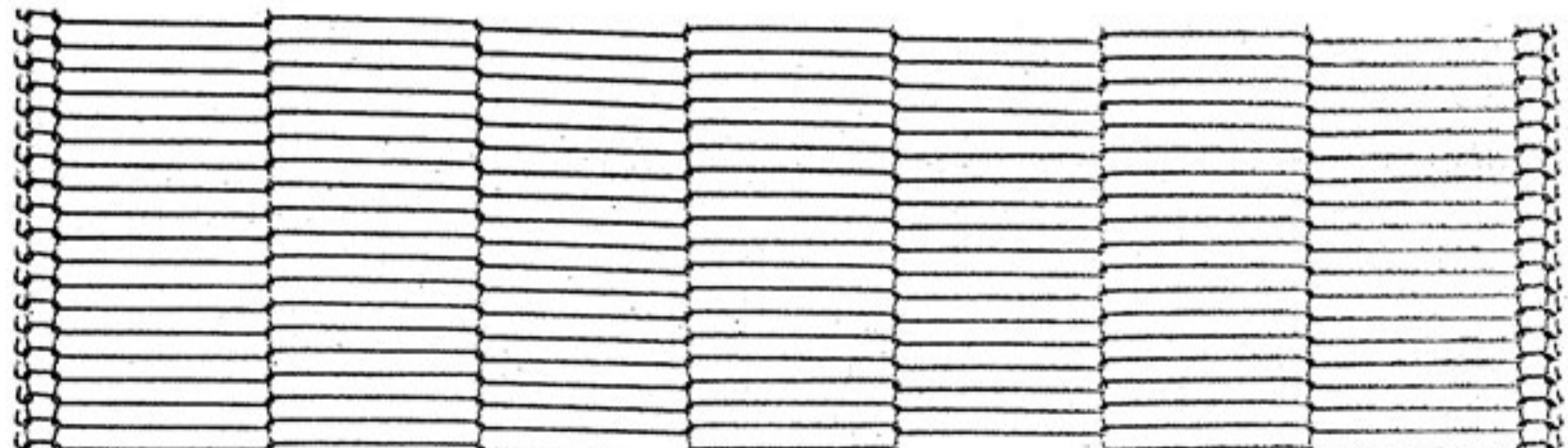


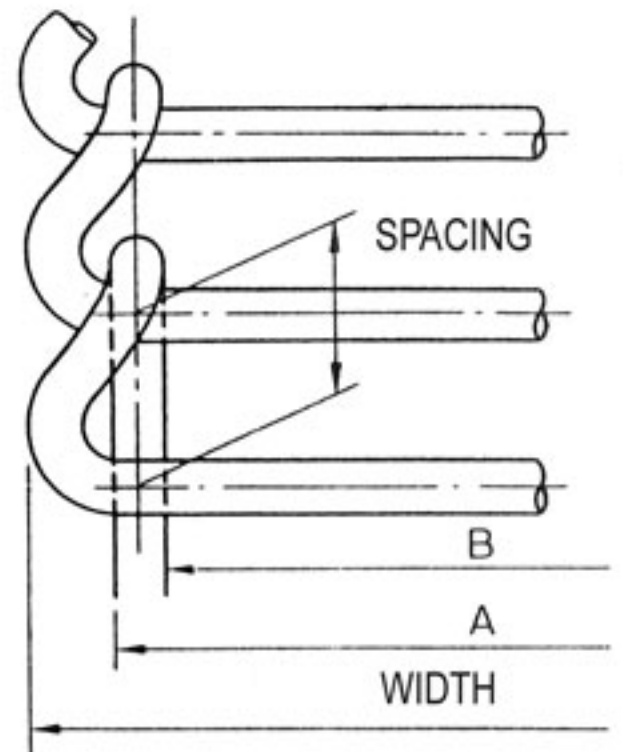
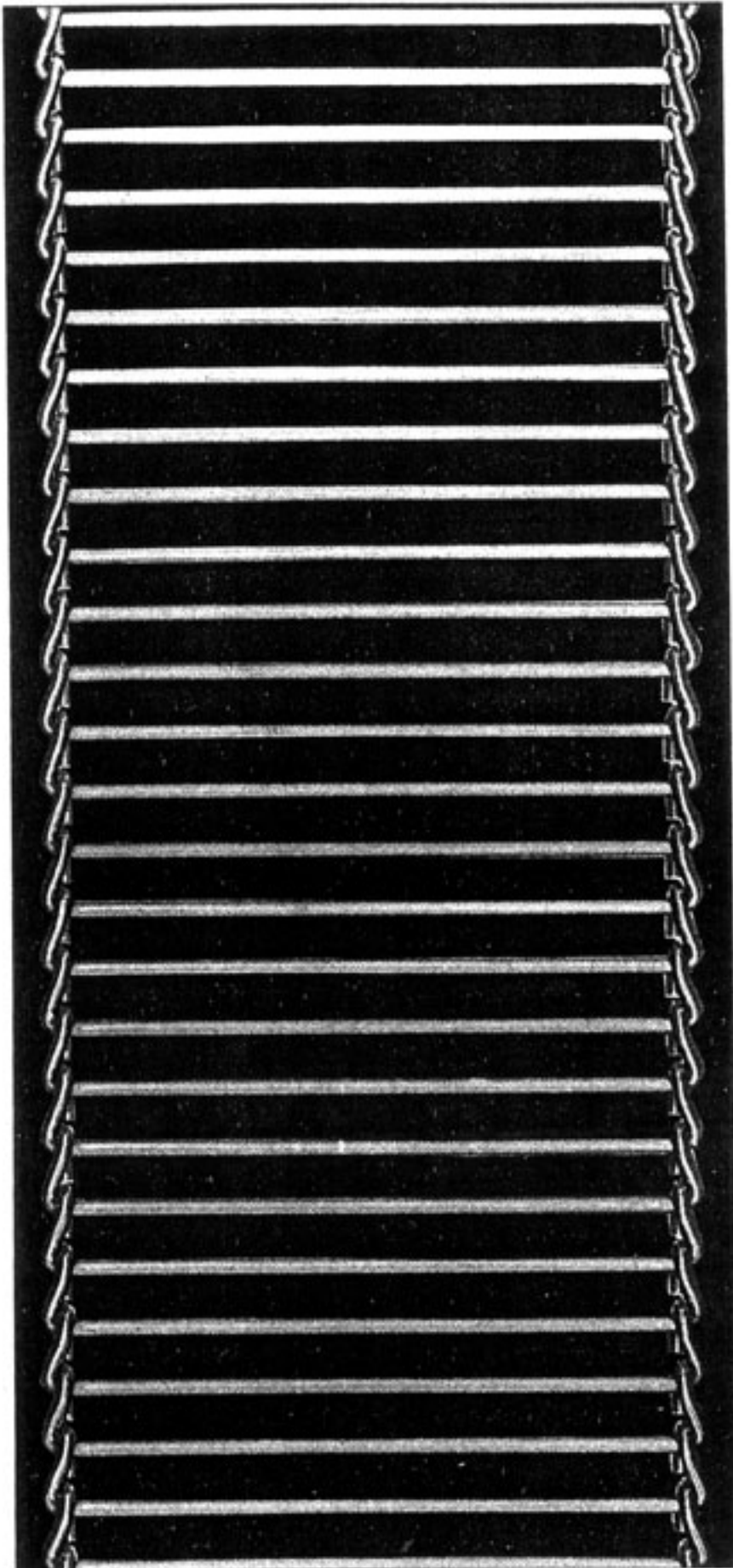
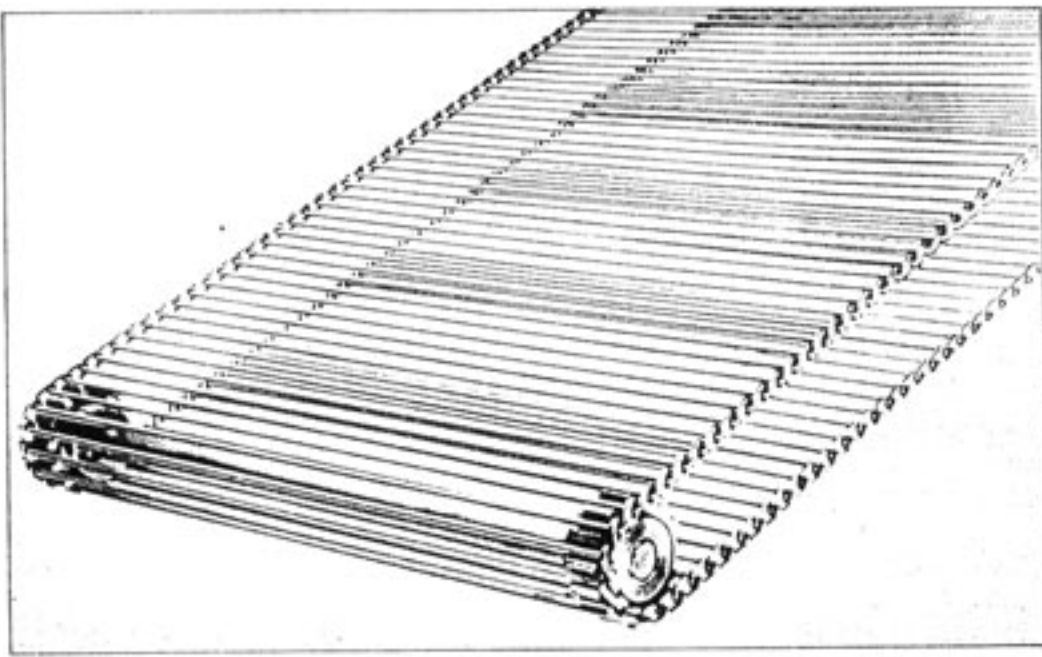


LADDER BELT



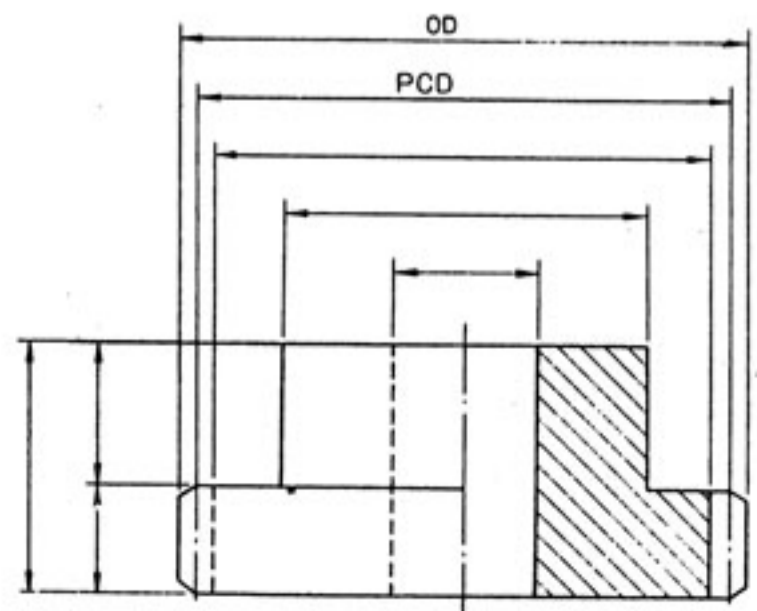
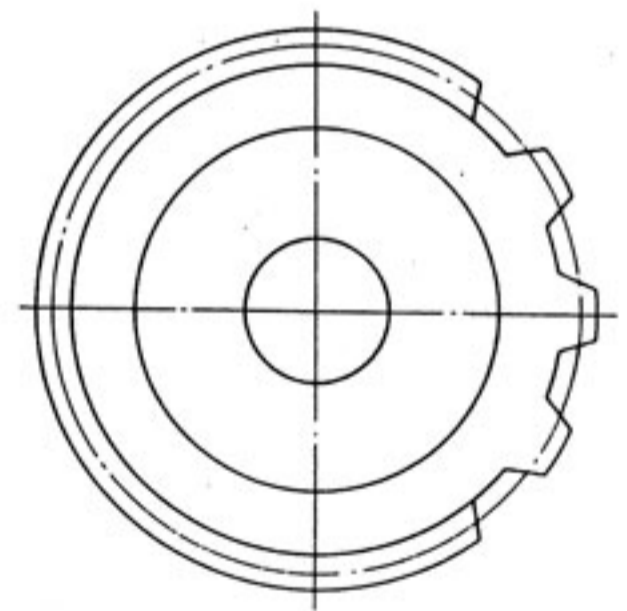
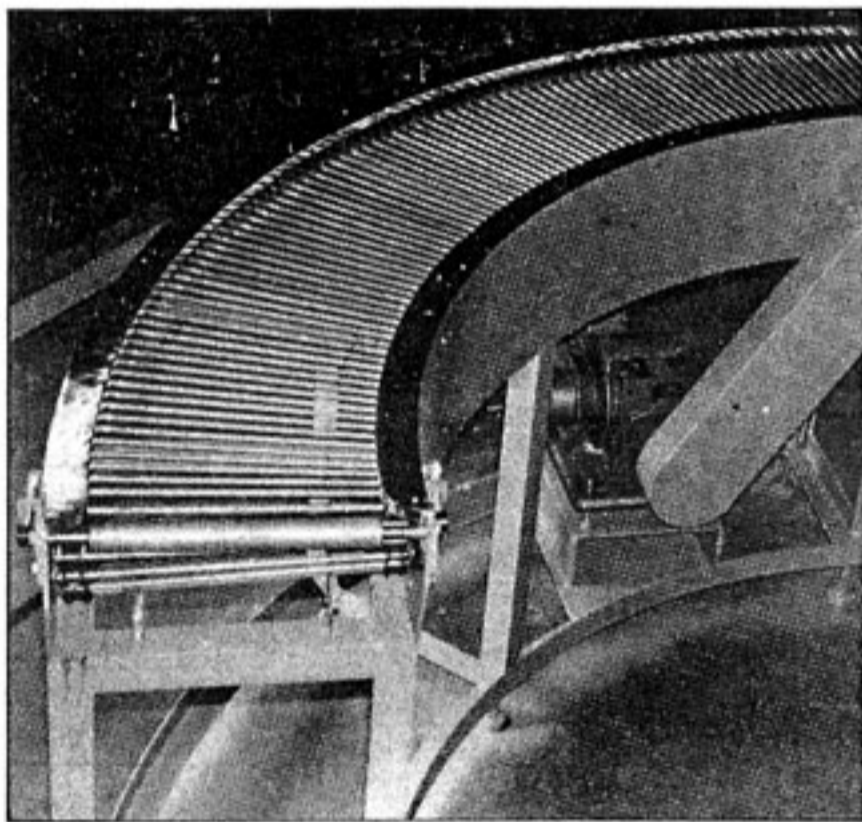
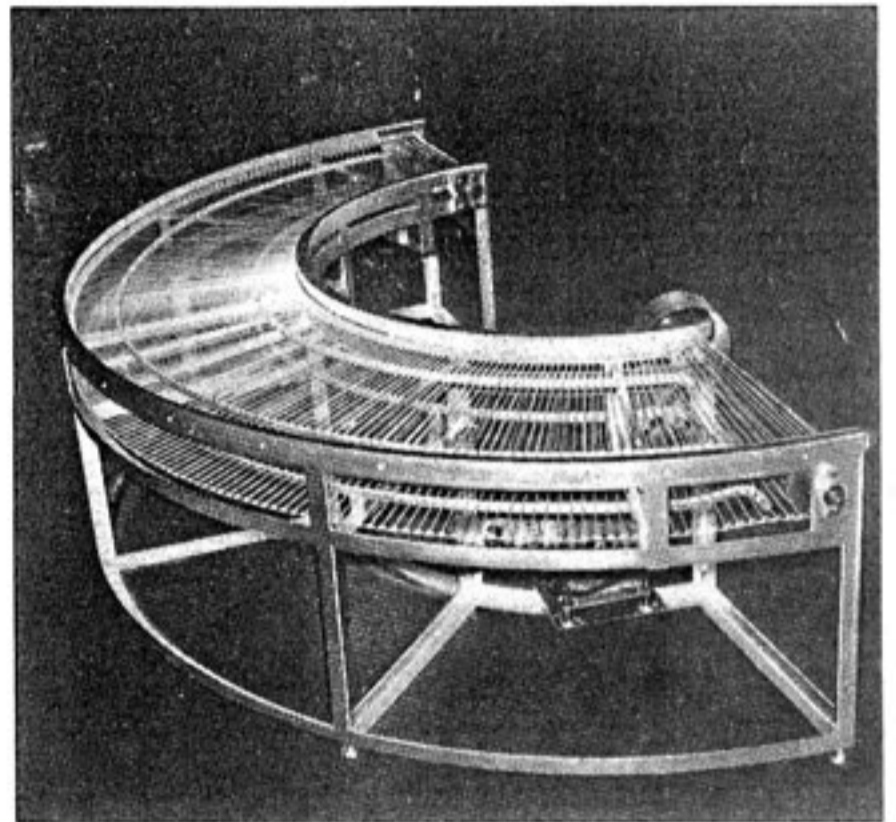
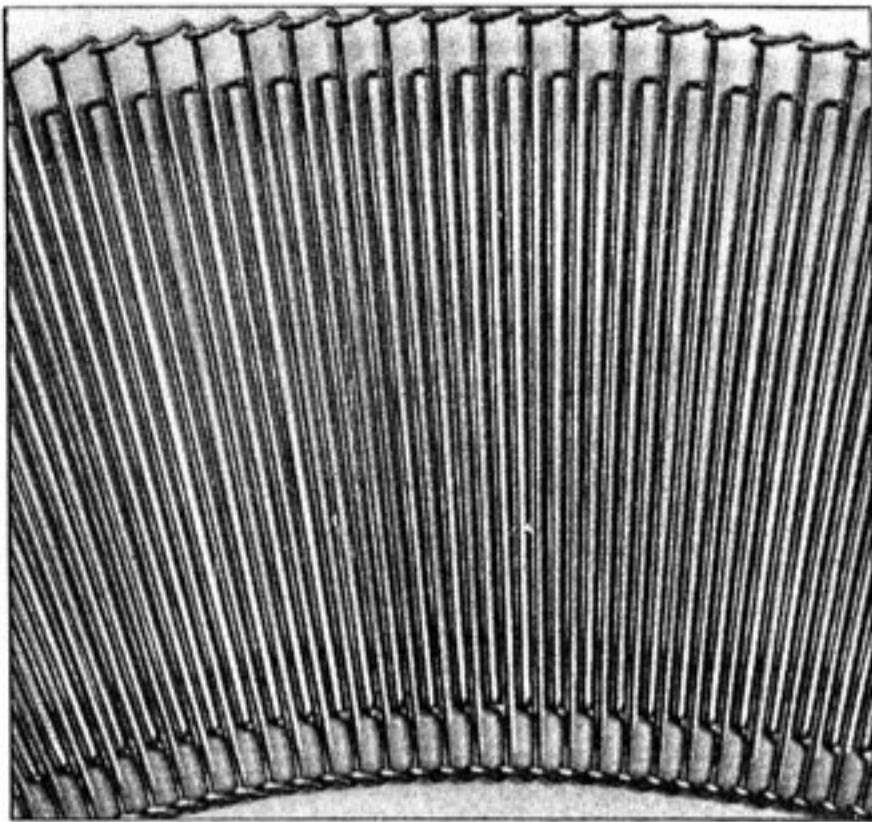
mm	mm
5.0	0.9
5.5	0.9~1.0
6.0	1.0
6.5	1.0~1.2
7.0	1.2





SPACING mm	WIRE DIA. mm	WT. kg / m ²
19.05	5.0	9.1

TURNTABLE BELT



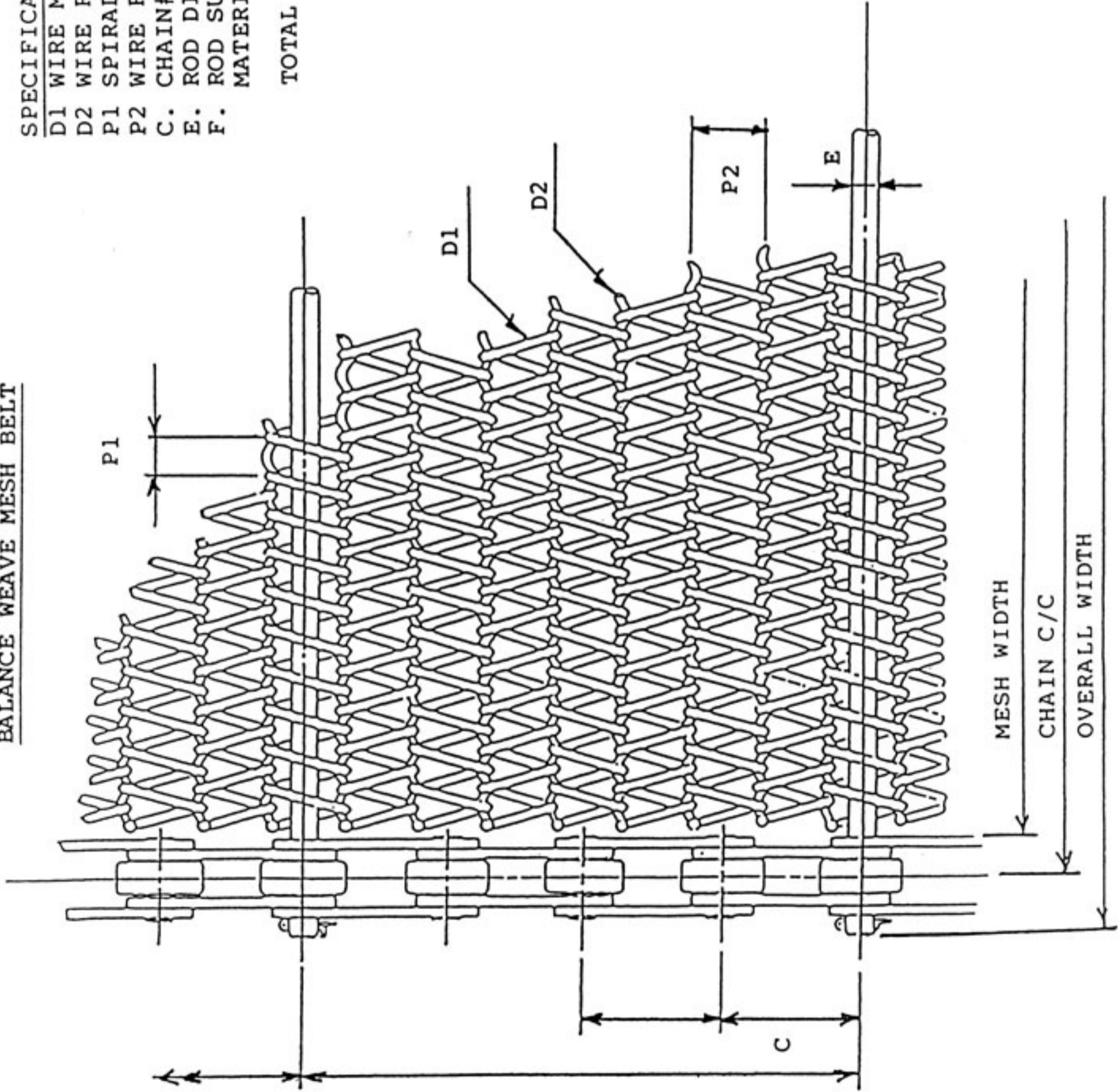
BALANCE WEAVE MESH BELT

SPECIFICATIONS

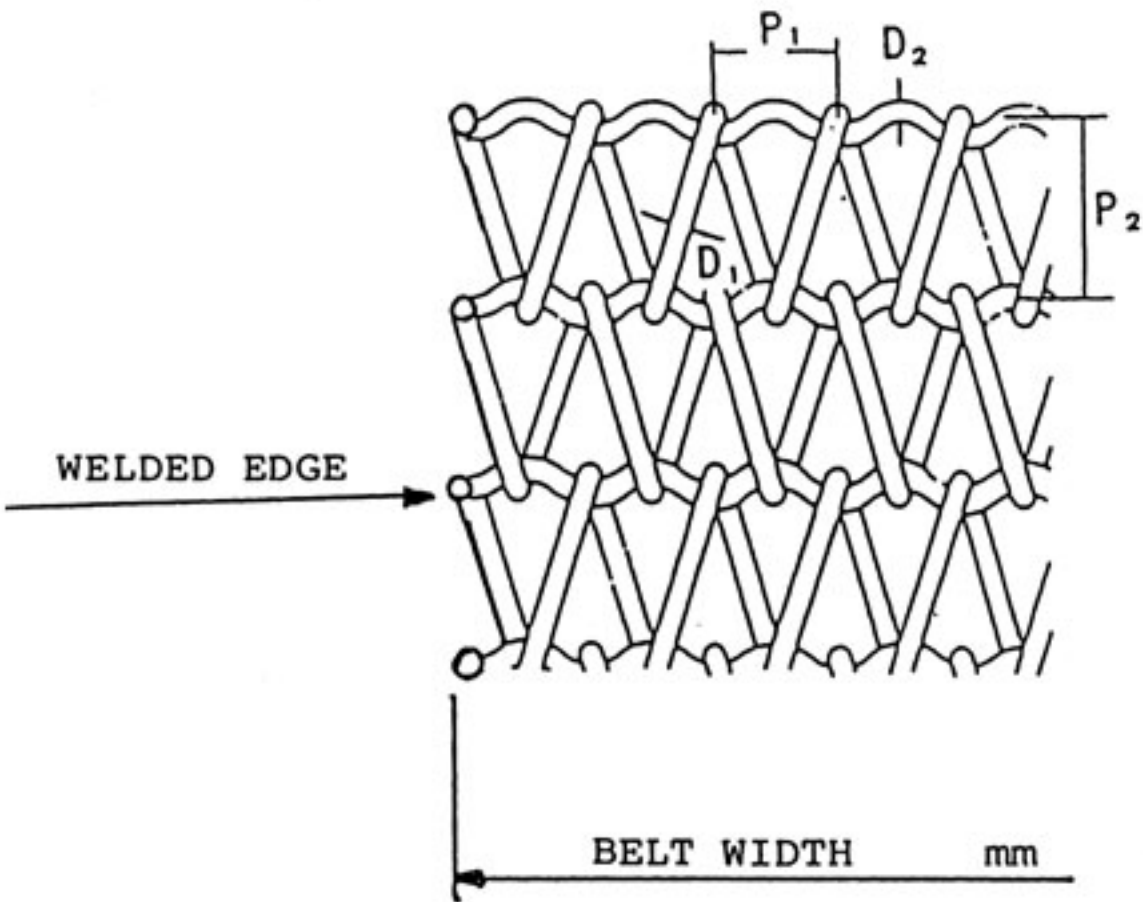
- D1 WIRE MESH DIAMETER mm
- D2 WIRE ROD DIAMETER mm
- P1 SPIRAL PITCH mm
- P2 WIRE ROD PITCH mm
- C. CHAIN# _____
- E. ROD DIAMETER mm
- F. ROD SUPPORTS mm

MATERIAL: STAINLESS STEEL
GALANISED STEEL

TOTAL LENGTH : _____



BALANCED BELT



D1 SPIRAL WIRE DIAMETER	mm
D2 ROD DIAMETER	mm
P1 SPIRAL PITCH	mm
P2 ROD PITCH	mm
M MATERIAL : WIRE MESH	<input type="checkbox"/> SUS 304 <input type="checkbox"/> M.STEEL
TOTAL LENGTH	

A: _____ d

B: _____

C: _____

